

NEHA Certified Foodborne Outbreak Investigator (CFOI) Credential

NEHA is excited to announce the NEW **Certified Foodborne Outbreak Investigator Credential** (CFOI)! By obtaining the CFOI credential, you are able to demonstrate your knowledge and competency, and enhance your credibility, in outbreak investigations. <http://neha.org/node/59311>

NEHA Foodborne Illness Outbreak Environmental Assessment (FBEA) Certificate Training

The **FBEA Certificate Training** is designed for environmental health specialists who want to take the most in-depth training available on environmental assessments. This comprehensive self-paced training covers 13 environmental assessment topics and incorporates a variety of existing trainings from mixed modalities into the curriculum. <https://neha.moonami.com/>



Environmental Assessment QuickTrain Series

The **Environmental Assessment QuickTrain** consists of four interactive, click-through modules covering the basics of environmental assessments. The modules are 10-15 minutes each and do not need to be completed together or sequentially, so they are ideal for a new employee with limited time. This training was developed by the Colorado Integrated Food Safety Center of Excellence. COFoodSafety.org

Environmental Assessment Just-in-Time Training

The **Environmental Assessment Just-in-Time Training** provides a snapshot of information vital to conducting a successful environmental assessment in a printable format. This training was developed by the Colorado Integrated Food Safety Center of Excellence with the National Association of County and City Health Officials (NACCHO) Food Safety Workgroup. <http://cofoodsafety.wixsite.com/eajitt>



CDC e-Learning on Environmental Assessment of Foodborne Illness Outbreaks

CDC's fun, FREE, and interactive **e-Learning on Environmental Assessment of Foodborne Illness Outbreaks** course is a detailed, self-paced online simulation that uses a guided avatar covering various aspects of environmental assessments.



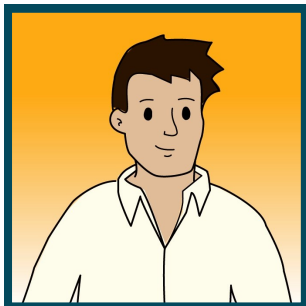
Looking for additional resources on environmental assessments?

NEHA's training portal includes trainings, resources, and tools for environmental health professionals conducting environmental assessments as part of a foodborne illness outbreak investigations. <http://neha.org/node/59334>

The Team

Introductions & Recommendations

Hector, New Hire



Hector is a registered Environmental Health Specialist who has not helped with an outbreak. Hector's new supervisor wants him to have a detailed background on environmental assessments to be prepared for his new position.

Recommended Training: CDC e-Learning on Environmental Assessment of Foodborne Illness Outbreaks

Nora, Team Lead



Nora has experience investigating outbreaks, and environmental assessments will be her primary responsibility.

Recommended Training: Foodborne Illness Outbreaks Environmental Assessment Certificate Training & Certified Foodborne Outbreak Investigator (CFOI) Credential

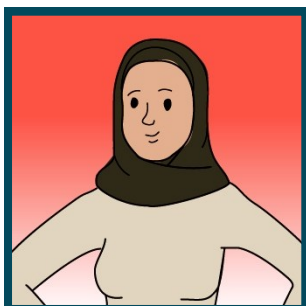
Chris, Intern



Chris is the department intern. He will be working for 6 months and is new to environmental assessments. The team wants him to have a quick introduction to environmental assessments.

Recommended Training: Environmental Assessment Quick Train Series

Amanda, Needs Refresher



Amanda has experience with environmental assessments, but has not conducted one in some time. She received a phone call from a coworker telling her she will be performing one this evening. She needs a quick review and templates to take with her.

Recommended Training: Environmental Assessment Just-in-Time Training