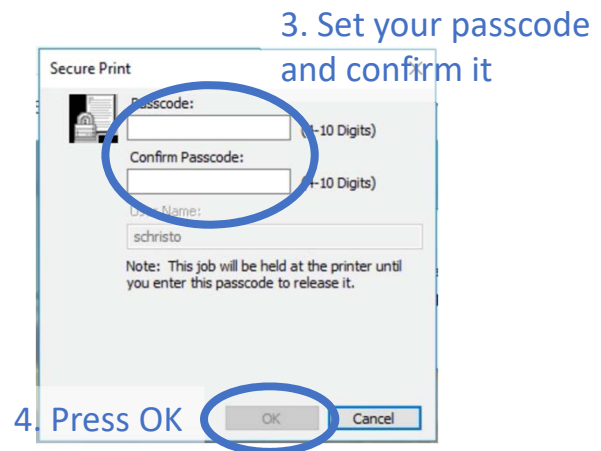
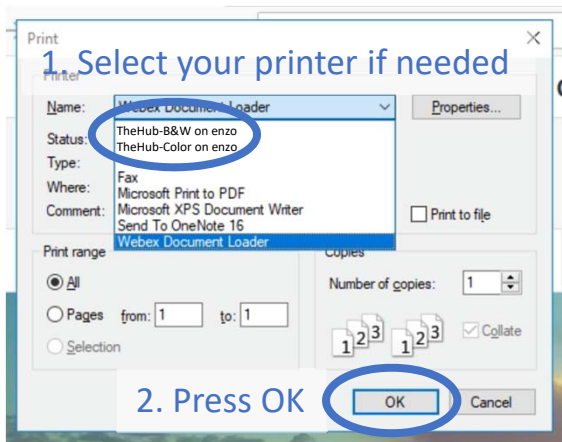


# Printing in The Hub

## Printing Notes:

- To print in black and white you will select the B&W printer (this is the default)
- To print in color you will select the Color printer
- When printing you will use a code of your choice each login, this will prevent your items from getting lost and protect HIPAA data



5. Your document will print and you can retrieve it using your code

*Note: Printing from Epic is not supported at this time. You can download the information you need to print to a PDF or copy and paste the information into a Word document. This will allow you to print your Epic information.*



The Hub

UNIVERSITY OF COLORADO  
ANSCHUTZ MEDICAL CAMPUS