

University of Colorado Health Sciences Center



Facilities Planning Process



October 8, 2003

UNIVERSITY OF COLORADO HEALTH SCIENCES CENTER FACILITIES PLANNING PROCESS

The updated University of Colorado Health Sciences Center (UCHSC) facilities planning process is designed to define the authority and decision-making for campus planning, including both Fitzsimons Development and the temporary use of backfill space during the transition. This process will streamline and expedite facilities planning to assure the timely relocation from 9th and Colorado to Fitzsimons.

UCHSC Facilities Oversight Committee

The UCHSC Facilities Oversight (UFO) Committee will be chaired by the Chancellor and the Vice Chancellor for Campus Planning and Development. Membership will include the Executive Vice Chancellor, the Planning Director, and chairs of the Education, Research, and Office Oversight Committees, and the Vice Chair of the Research Oversight Committee. The UFO will consult with the deans, executive committee, and the constituent groups as necessary. This committee will address policy decisions, campus level matters, and other issues and be the final decision point for campus planning. Space allocation decisions will follow the approved space guidelines. All backfill issues will be handled by the UFO.

Education, Office and Research Oversight Committees

The three topic area oversight committees (office, education and research) will serve as the point of contact for the Vice Chancellor for Campus Planning and Development and the planning and facilities projects offices and make key decisions for each subject area. This structure is essential to assure the thoughtful and timely progression from programming, to design and then construction of facilities. These committees will determine the programmatic allocation for the facilities, the adjacencies, and the specific locations. Any issues that cannot be resolved by these groups will be brought to the UFO. These committees will be composed of representatives from the schools and chaired by the Vice Chancellor for Research, the Vice Chancellor for Administration and Finance, and the Associate Vice Chancellor for Academic Affairs and be staffed by the planning office. The Oversight Committees will delegate planning for a specific facility to that facilities Building Committee.

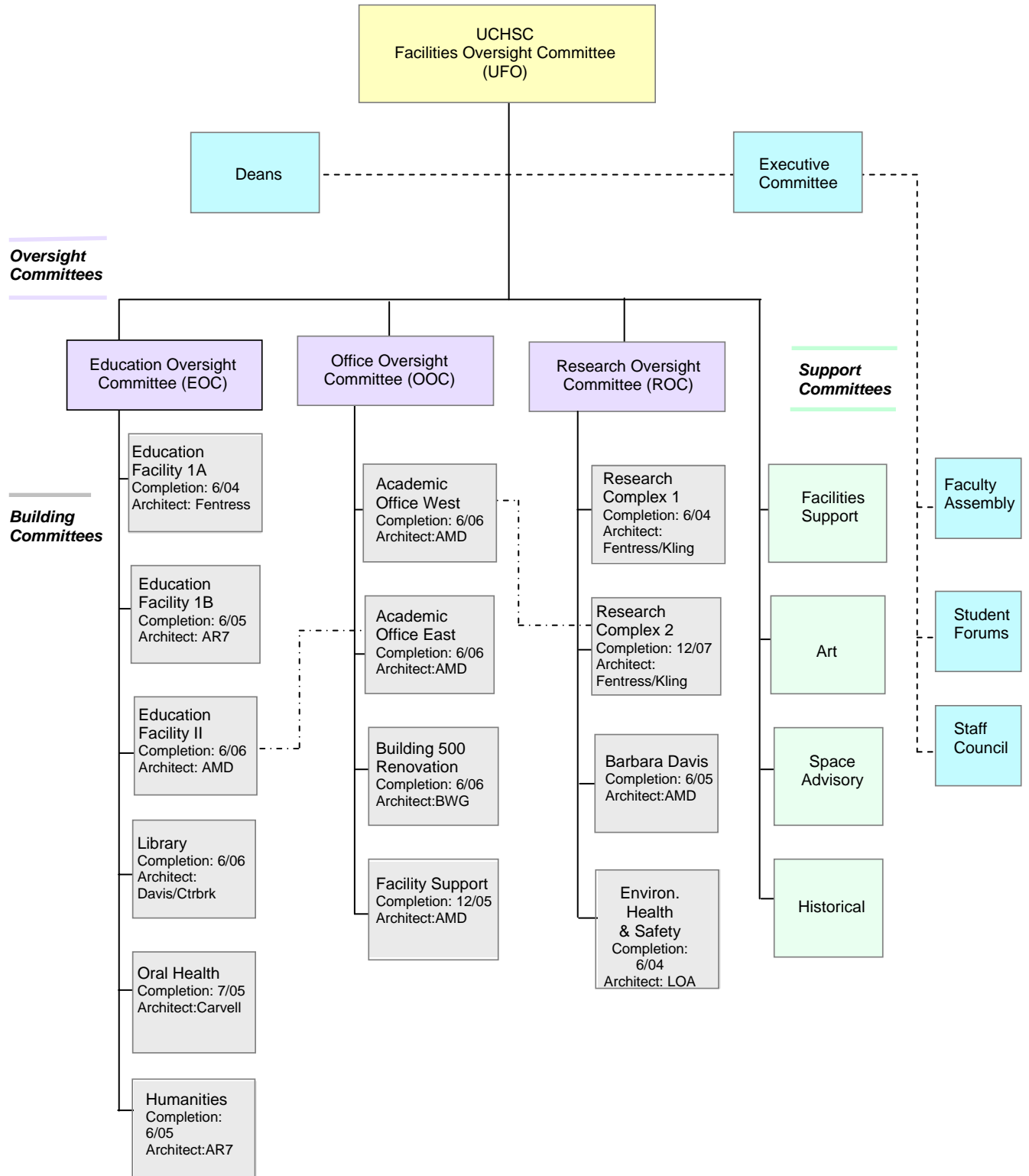
Building Committees

The Building Committees will report to the appropriate oversight committee. Members of the Building Committees will be those persons invested in that facility and primarily those who will use or reside in a particular structure. The members will plan and design the facility and be those persons working directly with the architects. A Building Committee may have subcommittees to address specific issues within that facility. Any issues that cannot be resolved by a Building Committee will be brought to the Oversight Committee and if necessary to the UFO.

Support Committees

Three committees will be convened to support the Building and Oversight Committees. They include facilities support, art, and the existing space advisory committee.

UNIVERSITY OF COLORADO HEALTH SCIENCES CENTER FACILITY PLANNING COMMITTEES



UCHSC FACILITIES OVERSIGHT (UFO) COMMITTEE

MEMBERSHIP:

James H. Shore, M.D., Chancellor, Co-Chair

Timothy D. Romani, Vice Chancellor for Planning and Development, Co-Chair

Teresa Berryman, Vice Chancellor for Administration and Finance

Marguerite Childs, Vice Chancellor for Academic Affairs

Jay A. Gershen, D.D.S., Ph.D., Executive Vice Chancellor

E. Chester Ridgway, M.D., Vice Chair of Research Oversight Committee

Jerry Scezney, Interim Chief Planning Officer

John Sladek, Ph.D., Vice Chancellor for Research

EDUCATION OVERSIGHT COMMITTEE (EOC)

MEMBERSHIP:

Marguerite Childs, Associate Vice Chancellor for Academic Affairs, Chair
Denise Kassebaum, D.D.S., Executive Associate Dean, SOD
Jerry Merenstein, M.D., Senior Associate Dean for Education, SOM
Marlaine Smith, RN, Ph.D., Associate Dean for Academic Affairs, SON
Ralph Altieri, Ph.D., Associate Dean, SOP
Lynn Mason, Graduate School

STAFF:

Bradford Silsby, Institutional Planning Office

EDUCATION BUILDING COMMITTEE (1A, 1B, AND II)

MEMBERSHIP:

Marguerite Childs, Associate Vice Chancellor for Academic Affairs, Chair
Ralph Altieri, Ph.D., Associate Dean, SOP
Gwen Barley, Ph.D., Director, Center for Studies in Clinical Excellence, SOM
Phoebe Barton, Ph.D., Professor of Preventive Medicine, MSPH
Robin Harvan, EdD., Interim Director, AHEC, OAA
Carolyn Heriza, Program Director, Physical Therapy
Randy Holmes, M.D, Ph.D., Professor/Chair of Microbiology, SOM
Kathryn Howell, Ph.D., Professor of Cell & Structural Biology, Graduate School
Jim Huff, Educational Support Services, OAA
Denise Kassebaum, D.D.S., Executive Associate Dean, SOD
Don Kleier, DMD, Professor/Chair, SOD
Lynn Mason, Ph.D., Graduate School, OAA
Jerry Merenstein, M.D., Senior Associate Dean for Education, SOM
Susan Paulsen, PharmD, Assistant Professor, SOP
Gayle Preheim, RN, Ph.D., Associate Professor, SON
Marlaine Smith, RN, Ph.D., Associate Dean for Academic Affairs, SON
Bruce Wallace, Ph.D., Professor, Physiology and Biophysics, SOM
Denny Webster, RN, Ph.D., Professor, SON

STAFF:

Mike Barden, Facilities Projects
Tom Lewakowski, Facilities Project, Ed II
Kathy McNally, Facilities Projects, Ed IB
Ron Rasmussen, Facilities Projects, Ed 1A
Brad Silsby, Planning – Ed 1A, Ed 1B, Ed II

COMPLETION DATE(S):

Facility 1A: June 2004
Facility 1B: June 2005
Facility II: June 2006

ARCHITECT(S):

Facility 1A: Fentress
Facility 1B: AR7
Facility II: AMD

CONTRACTOR(S):

Education II: Haselden Construction Inc./Barton Malow Company

LIBRARY

MEMBERSHIP:

Rick Forsman, Director, Denison Library, Chair
Sandy Arnesen, Head Systems/Databases, Denison Library
Roy Brunson, Student, School of Pharmacy
Marguerite Childs, Associate Vice Chancellor for Academic Affairs
Tonya Criner, PharmD, Director, Drug Information Center, School of Pharmacy
Bette DeMasters, M.D., Professor in Pathology, School of Medicine
Ronald E. Gill, Ph.D., Assistant Professor, Graduate School
Chris Harvan, DMD, Associate Professor, School of Dentistry
Carole Hirschfield, Head Circulation, Denison Library
Pat Nelson, Assistant Director, Denison Library
Judy Norman, Director of Development, Denison Library
Sandi Parker, Head Reference, Denison Library
Gerald Perry, Deputy Director, Denison Library
Catherine Reiter, Head Interlibrary Loan, Denison Library
Robert Shikes, M.D. Professor in Pathology, School of Medicine
Diane Skiba, Ph.D., Associate Professor, School of Nursing
Debra Silva, Assistant to the Director, Denison Library
Lisa Traditi, Head Education/LRC, Denison Library

STAFF:

Kathy McNally, Facilities Projects
Jerry Scezney, Planning Office

COMPLETION DATE: June 2006

ARCHITECT: Davis Partnership Architects/Centerbrook

CONTRACTOR: M. A. Mortenson Company

CENTER FOR ORAL HEALTH

MEMBERSHIP:

Robert Trombly, D.D.S., JD, Associate Dean, School of Dentistry, Chair
Gail Cross-Poline, Professor and Chair, School of Dentistry
David Holmes, D.D.S., Associate Professor, School of Dentistry
Lonnie Johnson, D.D.S., Ph.D., Professor, School of Dentistry
Denise Kassebaum, D.D.S., Executive Associate Dean, School of Dentistry
Don Kleier, DMD, Professor and Chair, School of Dentistry
John McDowell, D.D.S., Assistant Professor, School of Dentistry
Larry Oesterle, D.D.S., Professor and Chair, School of Dentistry
Craig Passon, D.D.S., Associate Professor, School of Dentistry
Dan Wilson, D.D.S., Associate Professor, School of Dentistry
Steve Wilson, DMD, Ph.D., Professor and Chair, School of Dentistry

STAFF:

Mike Barden (Steve Hecht), Facilities Projects Department
Bradford Silsby, Institutional Planning

COMPLETION DATE: July 2005

ARCHITECT: Christopher Carvell Architects/Bohlin Cywinski Jackson Architects

CONTRACTOR: Saunders Construction Inc.

CENTER FOR BIOETHICS & HUMANITIES

MEMBERSHIP:

Mark Yarborough, Chair
Marilyn Coors, CFBH
Jackie Glover, CFBH
Lynn Mason, Ph.D., Graduate School, OAA
Dayna Mathews, CFBH
Jerry Merenstein, M.D., Senior Associate Dean for Education, SOM
Steve Siefert, Community Member
Mary Lou Wallace, CFBH
(Vacant) Student

STAFF:

Noel Copeland, Planning Office
Brad Silsby, Planning Office – Ed 1A, Ed 1B, Ed II
Kathy McNally, Facilities Projects Ed 1B

COMPLETION DATE: June 2005

ARCHITECT: AR7

CONTRACTOR:

OFFICE OVERSIGHT COMMITTEE (OOC)

MEMBERSHIP:

Teresa Berryman, Chair
Jay Gershen, DDS, Ph.D., Executive Vice Chancellor
Don Aldrich, Director of Facilities, SOM
Louis Diamond, Ph.D., Dean, SOP
John Freed, Ph.D., Dean, Graduate School
Wayne Henderson, Associate Dean, SOD
Lilly Marks, Sr. Associate Dean, SOM
Jessica McCoy, Director, Personnel & Facilities, SON
Patricia Moritz, RN, Ph.D., Dean, SON
E. Chester Ridgway, M.D., Associate Dean, SOM
Susan Saunders, Assistant to Dean, SOP
Robert Trombly, Associate Dean, SOD

STAFF:

Jerry Scezney, Planning Office

ACADEMIC OFFICE WEST—BUILDING COMMITTEE

MEMBERSHIP:

Jay Gershen, DDS, Ph.D., Executive Vice Chancellor, Chair

Membership pending building assignment by the Office Oversight Committee:

E. Chester Ridgway, M.D., Associate Dean, SOM

Don Aldrich, Director of Facilities, SOM

David Hill, Associate Professor & Associate Dean, SOP

Susan Saunders, Assistant to the Dean, SOP

SOM Representative Faculty Members - TBD

SOP Representative Faculty Members - TBD

STAFF:

Jerry Scezney, Planning Office

Dan Shomers, Project Manager

COMPLETION DATE: June 2006

ARCHITECT: Anderson Mason Dale

CONTRACTOR: The Weitz Company

ACADEMIC OFFICE EAST—BUILDING COMMITTEE

MEMBERSHIP:

Jay Gershen, DDS, Ph.D., Executive Vice Chancellor, Chair

Membership pending building assignment by the Office Oversight Committee:

Don Aldrich, Director of Facilities, SOM

Marilyn Krajicek, RN, EdD, Associate Professor, SON

Jessica McCoy, Director, Personnel and Facilities, SON

Susan Saunders, Assistant to Dean, SOP

CS&A Representative Member - TBD

OAA Representative Members – TBD

SOM Representative Faculty Members - TBD

STAFF:

Brad Silbsy, Planning Office

Tom Lewakowski, Facilities Project

COMPLETION DATE: June 2006

ARCHITECT: Anderson Mason Dale

CONTRACTOR: Haselden Construction Inc./Barton Malow Company

BUILDING 500 RENOVATION—BUILDING COMMITTEE

MEMBERSHIP:

Teresa Berryman, Vice Chancellor for Administration and Finance, Chair

Membership pending building assignment by the Office Oversight Committee:

Lilly Marks, Sr. Associate Dean for Administration and Finance, SOM

Don Aldrich, Director of Facilities, SOM

Marguerite Childs, Associate Vice Chancellor for Academic Affairs

John Freed, Ph.D., Dean, Graduate School

Catherine Jarvis, PharmD, Assistant Dean, SOP

Lynn Mason, Ph.D., Director of Admissions and Student Services

Jeff Parker, Assistant Vice Chancellor, Finance and Controller, CSA

Chancellor Office Representative Appointed by the Chancellor

Other Representatives for Occupants TBD

STAFF:

Jerry Scezney, Planning Office

Brad Silbsy, Planning Office

Doug Derber, Project Manager

COMPLETION DATE: June 2006

ARCHITECT: Bennett, Wagner, and Grody

CONTRACTOR:

FACILITIES SUPPORT—BUILDING COMMITTEE

MEMBERSHIP:

Dave Turnquist, Assistant Vice Chancellor of Facilities Operations, Chair
Carol Calkins, Facilities Operations
Ralph Futch, Facilities Operations
Ida Lambert, Facilities Operations
Bob McGregor, Facilities Operations
David Rivera, Chief of Police
Jim Anderson, Street Maintenance and Repair
George Stumpf, Facilities Operations

STAFF:

Jerry Scezney, Planning Office
Sharon Anthony, Project Manager

COMPLETION DATE: December 2005

ARCHITECT: Anderson Mason Dale

CONTRACTOR: Adolfson & Peterson Construction

RESEARCH OVERSIGHT COMMITTEE (ROC)

MEMBERSHIP:

John R. Sladek, Ph.D., Vice Chancellor for Research, Chair
E. Chester Ridgway, M.D., Associate Dean, SOM, Vice Chair
David Ross, Ph.D., Associate Professor, SOP
Mary Blegen, Ph.D., RN, Associate Dean, SON
John Freed, Ph.D., Dean, Graduate School
David Quissell, Ph.D., Chairman and Professor, SOD

STAFF:

Don Aldrich, School of Medicine
Wayne Henderson, School of Dentistry
Jerry Scezney, Planning Office

RESEARCH COMPLEX I

MEMBERSHIP:

John R. Sladek, Ph.D., Vice Chancellor for Research, Co-Chair
E. Chester Ridgway, M.D., Associate Dean, SOM, Co-Chair
Teresa Berryman, Vice Chancellor, CSA
William Betz, Ph.D., Professor/Chairman of Physiology, SOM
Thomas Blumenthal, Ph.D., Professor/Chairman of Biochemistry, SOM
Mary Blegen, Ph.D., RN, Associate Dean, SON
Paul Bunn, M.D., Director of Cancer Center, SOM
Elizabeth D'Antoinio-Gan, Denison Library, OAA
Paul Fennessey, Ph.D., Professor of Pediatrics, SOM
Curt Freed, M.D., Professor of Clinical Pharmacology, SOM
Robert Freedman, M.D., Professor/Chairman of Psychiatry, SOM
Bill Freud, Assistant Vice Chancellor, Information Systems, CSA
Don Galarowicz, Information Systems
Lazaro Gerschenson, M.D., Ph.D., Professor/Chairman of Pathology, SOM
Richard Hamman, M.D., DrPH, Professor/Chairman of Preventive Medicine, SOM
Randall Holmes, M.D., Ph.D., Professor/Chairman of Microbiology, SOM
Terry Howard, Director, Health and Safety
Kathryn Howell, Ph.D., Professor of Cell & Structural Biology, SOM
Jim Huff, Educational Services, OAA
Regina Kilkenny, Ph.D., Dean's Office, SOM
Jeffrey Olson, M.D., Housestaff in Ophthalmology, SOM
Karl Pfenninger, M.D., Professor/Chairman of Cell & Structural Biology, SOM
Mary Reyland, Ph.D., Associate Professor, SOD
David Ross, Ph.D., Professor/Chair, SOP
Robert Shikes, M.D., Professor of Pathology, SOM
Richard Spritz, M.D., Director of Medical Genetics
James O. Stevens, DVM, Interim Veterinarian, SOM
Boris Tabakoff, Ph.D., Professor/Chairman of Pharmacology, SOM
David Turnquist, Assistant Vice Chancellor, Facilities Operations, CSA
Trevor Williams, Ph.D., Associate Professor, SOD

STAFF:

Don Aldrich, Director of Facilities, SOM
John Allison, Facilities Projects
Noel Copeland, Planning Office
Ron Rasmussen, Facilities Projects
Jerry Scezney, Planning Office

COMPLETION DATE: June 2004

ARCHITECT: Fentress/King

CONTRACTOR:

RESEARCH COMPLEX 2

MEMBERSHIP:

John R. Sladek, Ph.D., Vice Chancellor for Research, Co-Chair
E. Chester Ridgway, M.D., Associate Dean, SOM, Co-Chair
Edward Abraham, M.D., Professor of Pulmonary, SOM
Robert Anderson, M.D., Professor/Interim Chair of Medicine, SOM
Issam Awad, M.D., Professor of Neurosurgery, SOM
Donald Bellgrau, Ph.D., Professor of Immunology, SOM
Thomas Blumenthal, Ph.D., Professor/Chairman of Biochemistry, SOM
Mary Blegen, Ph.D., RN, Associate Dean, SON
Paul Bunn, M.D., Director of Cancer Center, SOM
John Cambier, Ph.D., Professor/Chairman of Immunology, SOM
Uwe Christians, M.D., Ph.D., Associate Professor of Anesthesiology, SOM
Paul Fennessey, Ph.D., Professor of Pediatrics, SOM
J. Gregory Fitz, M.D., Professor of Gastroenterology, SOM
Robert Freedman, M.D., Professor/Chairman of Psychiatry, SOM
Ronald Gibbs, M.D., Professor/Chairman of Obstetrics/Gynecology, SOM
Donald Gilden, M.D., Professor/Chairman of Neurology, SOM
Fred Grover, Jr., M.D., Professor/Chairman of Surgery, SOM
Robert Hodges, Ph.D., Professor of Biochemistry, SOM
Michael Holers, M.D., Professor of Rheumatology, SOM
Terry Howard, Director, Health and Safety
M. Douglas Jones, M.D., Professor/Chairman of Pediatrics, SOM
Brian L. Kotzin, M.D., Professor of Allergy and Clinical Immunology, SOM
Moshe Levi, M.D., Professor of Renal Medicine, SOM
Lonsbury-Martin, Brenda, Ph.D., Professor of Otolaryngology, SOM
Randall Meacham, M.D., Associate Professor of Surgery, SOM
Peggy Neville, Ph.D., Professor of Physiology, SOM
David Ross, Ph.D., Professor/Chair, SOP
Ann Scherzinger, Ph.D., Associate Professor of Radiology, SOM
Kevin Staley, M.D., Associate Professor of Neurology, SOM
James O. Stevens, DVM, Interim Veterinarian, SOM

STAFF:

Don Aldrich, Director of Facilities, SOM
Ron Rasmussen, Facilities Projects
Jerry Scezney, Planning Office

COMPLETION DATE: December 2007

ARCHITECT: Fentress/King

CONTRACTOR:

BARBARA DAVIS

MEMBERSHIP:

George Eisenbarth, Barbara Davis Center, Chair
Don Aldrich, School of Medicine
Amy Davis, Children's Diabetes Foundation
Lisa Herbert, Barbara Davis Center
John Hutton, Barbara Davis Center
Chrissy Lerner, Children's Diabetes Foundation
Sue Palandri, Children's Diabetes Foundation
Marian Rewers, Barbara Davis Center
Marnie Sekkengstad, Barbara Davis Center

STAFF:

Kathy McNally, Facilities Projects
Doug Derber, Facilities Projects
Jerry Scezney, Institutional Planning

COMPLETION DATE: June 2005

ARCHITECT: Anderson Mason Dale

CONTRACTOR:

ENVIRONMENTAL HEALTH & SAFETY

MEMBERSHIP:

Terry Howard, Health and Safety Division, Chair
Gary Roesch, Health and Safety Division
Riad Safadi, Health and Safety Division
Therese Stinnett, Health and Safety Division

STAFF:

Jerry Scezney, Institutional Planning
Dan Shomers, Facilities Projects

COMPLETION DATE: June 2004

ARCHITECT: LOA

CONTRACTOR:

SUPPORT COMMITTEE
FACILITIES SUPPORT COMMITTEE

MEMBERSHIP:

Dave Turnquist, Assistant Vice Chancellor, Facilities Operations, Chair
Don Aldrich, Director of Facilities, SOM
Ralph Futch, Material Management and Mail Services
Don Galarowicz, IT/Telecommunications
Terry Howard, Hazardous Materials
Jim Huff, Educational Support Services, OAA
Bob McGregor, Building Upkeep and Grounds
Dave Rivera, Police
Carol King Calkins, Parking and Transportation
George Stumpf, Building Maintenance, Operations and Repair

STAFF:

Mike Barden, Project Manager
Noel Copeland, Planning Office

SUPPORT COMMITTEE
ART

MEMBERSHIP:

Membership pending building assignment by the Office Oversight Committee:

SUPPORT COMMITTEE
ART – HISTORICAL PAGE

MEMBERSHIP:

Membership pending building assignment by the Office Oversight Committee:

SUPPORT COMMITTEE

SPACE ADVISORY

MEMBERSHIP:

Mike Karbach, Director of Real Estate, Chair
John Allison, Assistant Vice Chancellor, Facilities Projects
Don Aldrich, Director of Facilities, SOM
Jeff Parker, Assistant Vice Chancellor, SOM
John Sladek, Ph.D., Vice Chancellor for Research

AD HOC MEMBERS:

Mollie Anchustegui, Manager, Space Acquisition, HSC
Betty Charles, TeleHealth/TeleMed, OAA
Wayne Henderson, Associate Dean, SOD
Jessica McCoy, Director of Personnel/Facilities, SON
Pat Moritz, Ph.D., Dean, School of Nursing
Tony Ruiz, Vice President, Operations, UCH
Susan Saunders, Assistant to the Dean, SOP