



# United States Medical Licensing Examination<sup>®</sup>

## Step 2 CK Annual School Report

**Medical School:** U Colorado Denver School of Medicine

**School ID:** 006010

### Annual Report on Examinee Performance between 2021 - 2023

This report presents overall and content area results for examinees from your medical school taking Step 2 CK of the United States Medical Licensing Examination (USMLE<sup>®</sup>) from July 1, 2021 to June 30, 2024. If available, data from your previous two full academic years are also presented. Examinees who asked that their individual results be withheld are excluded from the school data for this report, unless the number of examinees making this request within an academic year was five or greater.

The tables below describe your examinees' performance along with the national group of examinees from LCME-accredited schools. The first table summarizes performance for first-time examinees. The second table shows performance for examinees who failed Step 2 CK in the academic year but repeated the examination later in the same year. This table only includes the most recent attempt for examinees repeating the examination multiple times within the same academic year. The second and third page of the report visualizes your first-time examinees' performance relative to the national group. The last section displays a summary of content area results in relation to a national comparison group. Graphic and content area summaries are only provided if your school had at least 20 first-time examinees in the respective academic year. Only the first page is provided if your school did not have at least 20 examinees in the current academic year.

Please visit the [MyNBME<sup>®</sup> Services Portal](#) for additional guidance on interpreting the various sections of this report.

### First-Time Examinees

Academic Year	Number Tested	Minimum Passing Score	School Pass Rate	National Pass Rate	School Mean (SD)	National Mean (SD)
2023-24	200	214	98%	98%	249 (15)	249 (15)
2022-23	200	214	98%	98%	248 (13)	248 (15)
2021-22	203	209	100%	99%	243 (14)	247 (15)

### Most Recent Repeat Attempt

Academic Year	Number Tested	Minimum Passing Score	School Pass Rate	National Pass Rate	School Mean (SD)	National Mean (SD)
2023-24	3	214	33%	85%	207 (14)	223 (13)
2022-23	4	214	100%	83%	219 (7)	222 (12)
2021-22	0	209	—	82%	— (—)	218 (12)

# United States Medical Licensing Examination<sup>®</sup>

## Step 2 CK Annual School Report

**Medical School:** U Colorado Denver School of Medicine

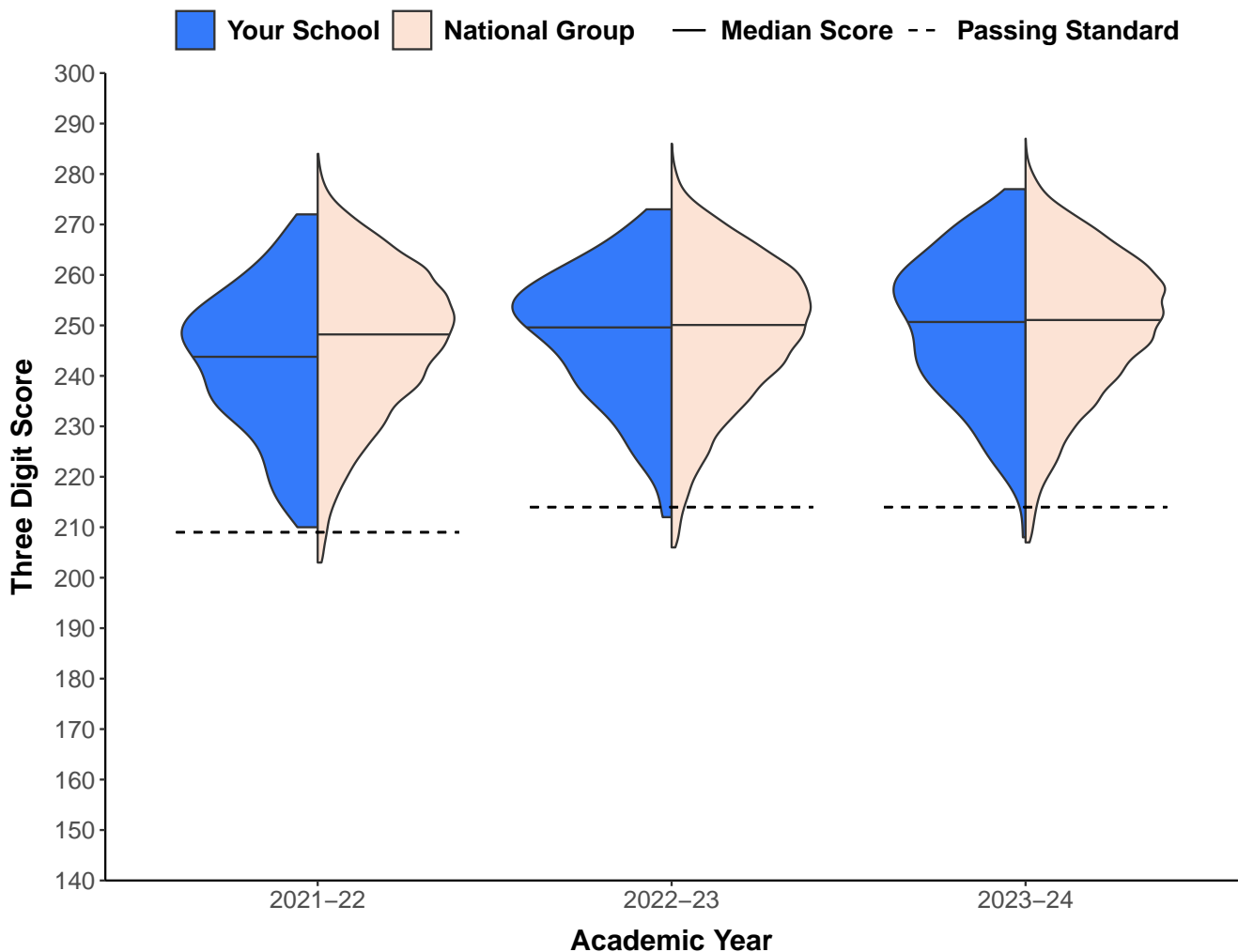
**School ID:** 006010

### Performance Trends Relative to the National Group

The graphic below displays the distribution of first-time examinee performance on Step 2 CK for your medical school and for the national group of first-time examinees from LCME-accredited schools who tested from July 1, 2021 to June 30, 2024. Data are presented for academic years in which your school had at least 20 first-time examinees. The figure shows:

- The median score, represented by a solid line
- The minimum passing standard for the corresponding academic year, represented by the dashed line
- Where the distribution peaks, indicating more examinees performed near that score
- The range of the distribution, which extends to the highest and lowest scores, excluding outliers beyond 3 standard deviations from the median

Please visit the [MyNBME Services Portal](#) for additional guidance on interpreting this visual.



# United States Medical Licensing Examination<sup>®</sup>

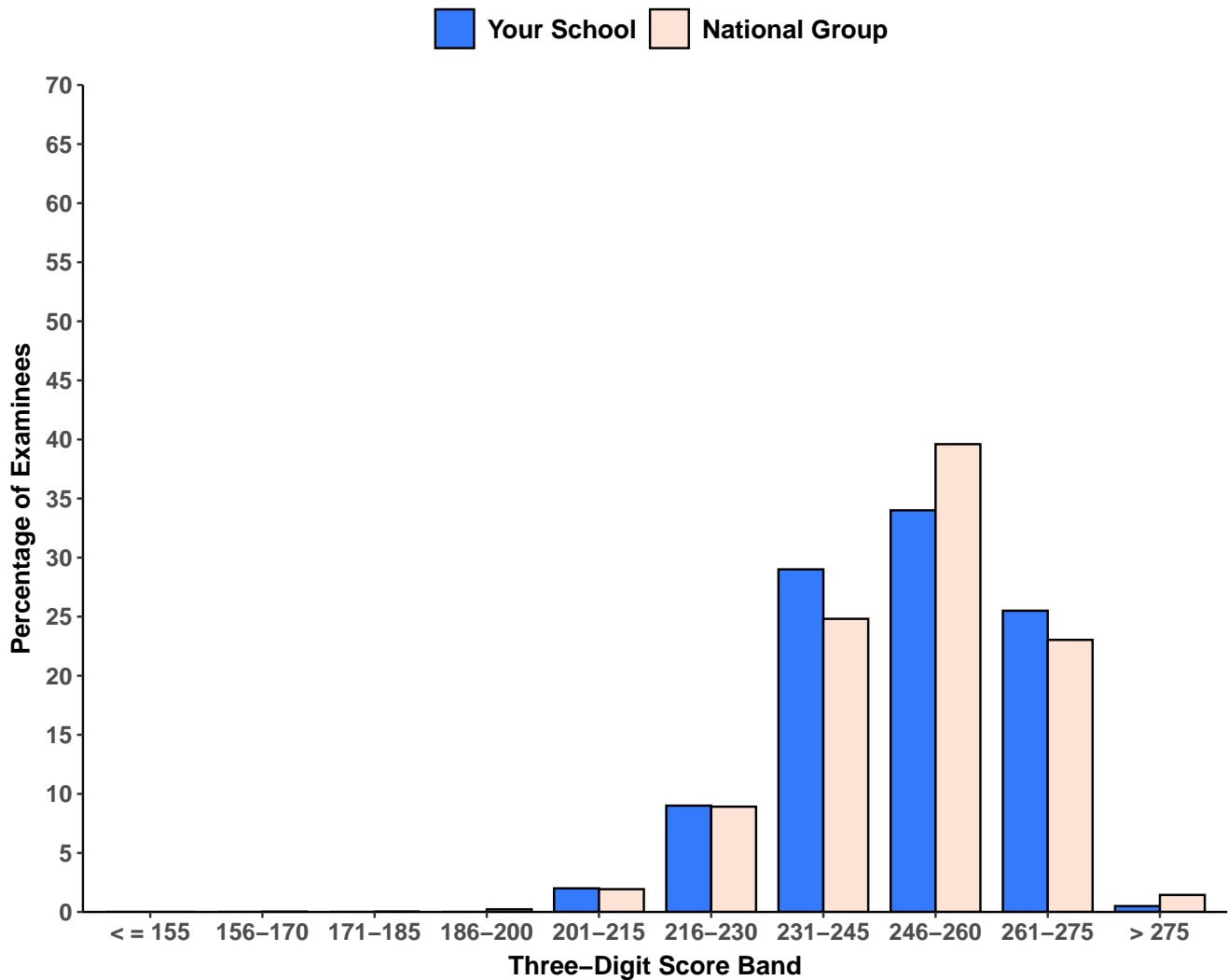
## Step 2 CK Annual School Report

**Medical School:** U Colorado Denver School of Medicine

**School ID:** 006010

### Distribution of Examinee Performance in 2023-24

The histogram below shows the proportion of first-time examinees scoring at various Step 2 CK score ranges for your medical school and for the national group of first-time examinees from LCME-accredited schools in 2023-24. Each bar represents the percentage of students who scored within the corresponding range.



# United States Medical Licensing Examination<sup>®</sup>

## Step 2 CK Annual School Report

**Medical School:** U Colorado Denver School of Medicine

**School ID:** 006010

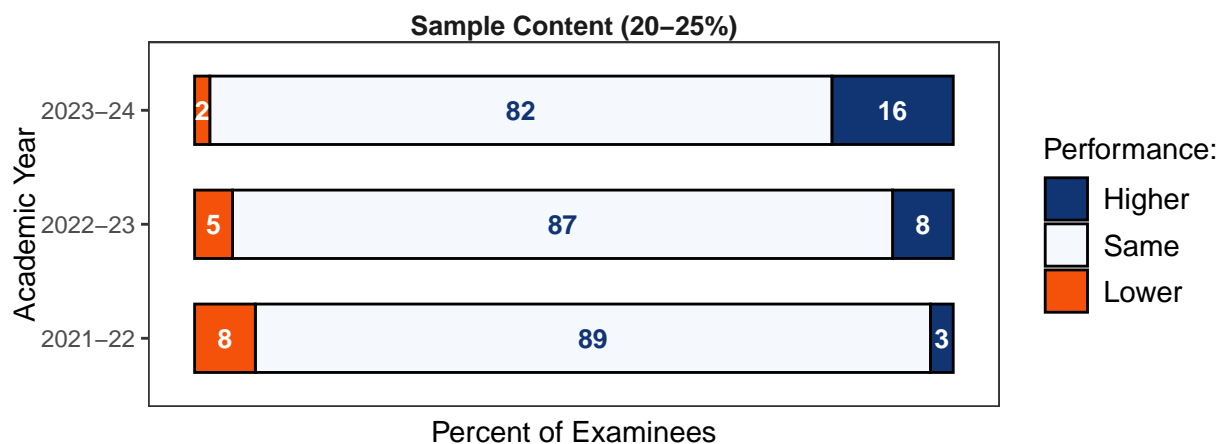
### Content Area Performance Summary

The following pages contain visual summaries of your students' performance on the Step 2 CK content areas over the past three academic years. Data are only presented for academic years in which your school had at least 20 first-time examinees. Each figure displays:

- The percent of items within the respective content area in parentheses beside the content area title
- The percentage of students who performed statistically lower (orange), about the same (grey), or higher (blue) in relation to the **national group of first-time examinees from LCME-accredited schools on each content area**
  - The percentage of students scoring in each performance level is rounded to the nearest whole number
  - You may see more students in higher and lower groupings for larger content areas as these content areas have more statistical power to show differences
  - Small percentages in the lower and higher categories, and small changes in these percentages across time, should not be overinterpreted as they can arise from random variations seen across cohorts

The example below shows a school that has noticeably increased the percentage of students in the higher category for the Sample Content category. In 2021-22, 3 percent of students performed statistically higher on the Sample Content category than the national average. By 2023-24, 16 percent of the cohort performed statistically higher on the Sample Content category.

Step 2 CK test items are deliberately designed to be integrative; most items contribute to the calculation of subscores in more than one discipline. Consequently, caution should be used in attributing differences in performance to individual courses at your school.



Additional guidance for interpreting content area performance can be found in the [MyNBME Services Portal](#).

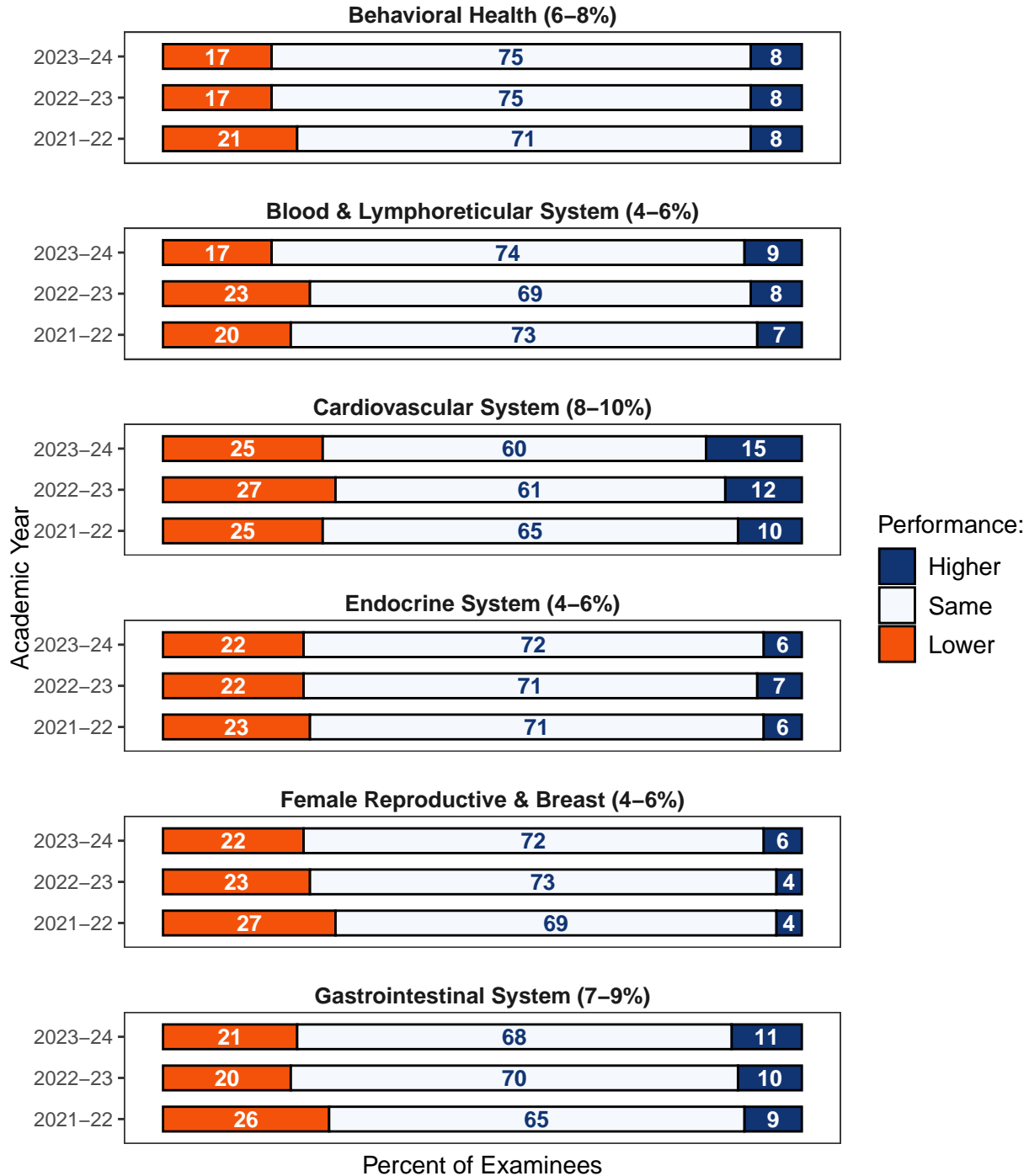
# United States Medical Licensing Examination<sup>®</sup>

## Step 2 CK Annual School Report

**Medical School:** U Colorado Denver School of Medicine

**School ID:** 006010

### Performance on System Categories Relative to National Average



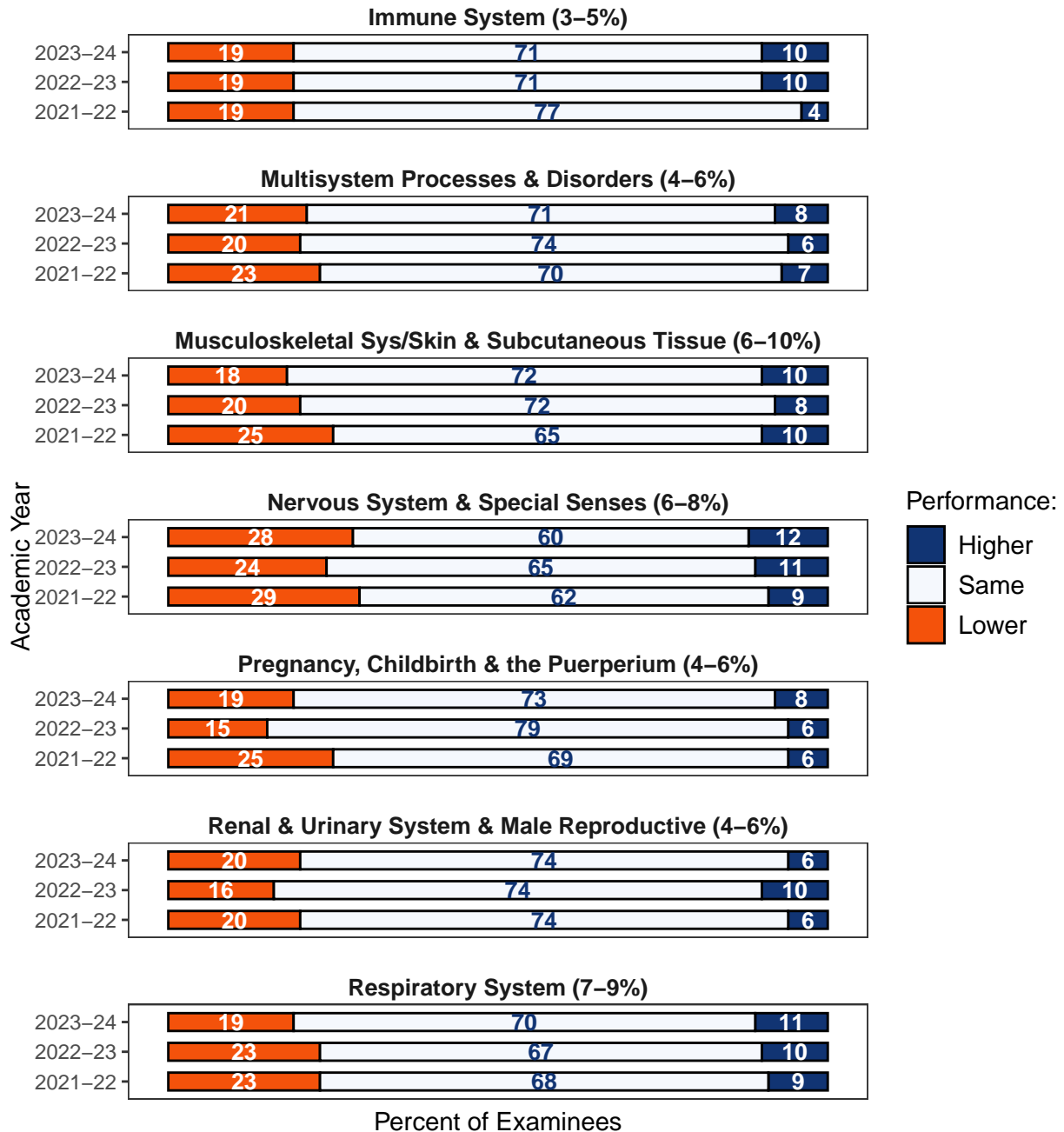
# United States Medical Licensing Examination<sup>®</sup>

## Step 2 CK Annual School Report

**Medical School:** U Colorado Denver School of Medicine

**School ID:** 006010

### Performance on System Categories Continued



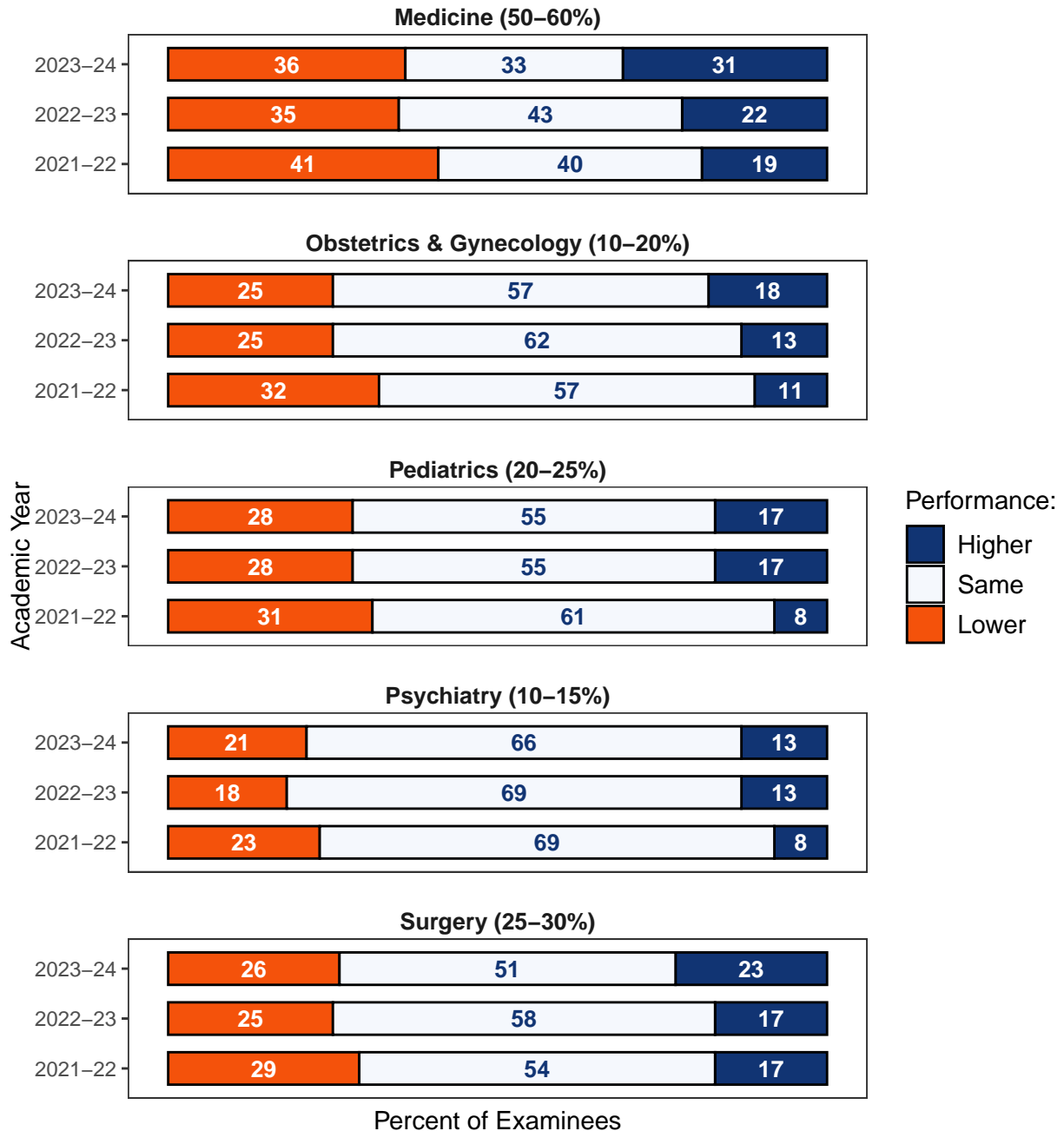
# United States Medical Licensing Examination<sup>®</sup>

## Step 2 CK Annual School Report

**Medical School:** U Colorado Denver School of Medicine

**School ID:** 006010

### Performance on Discipline Categories Relative to National Average



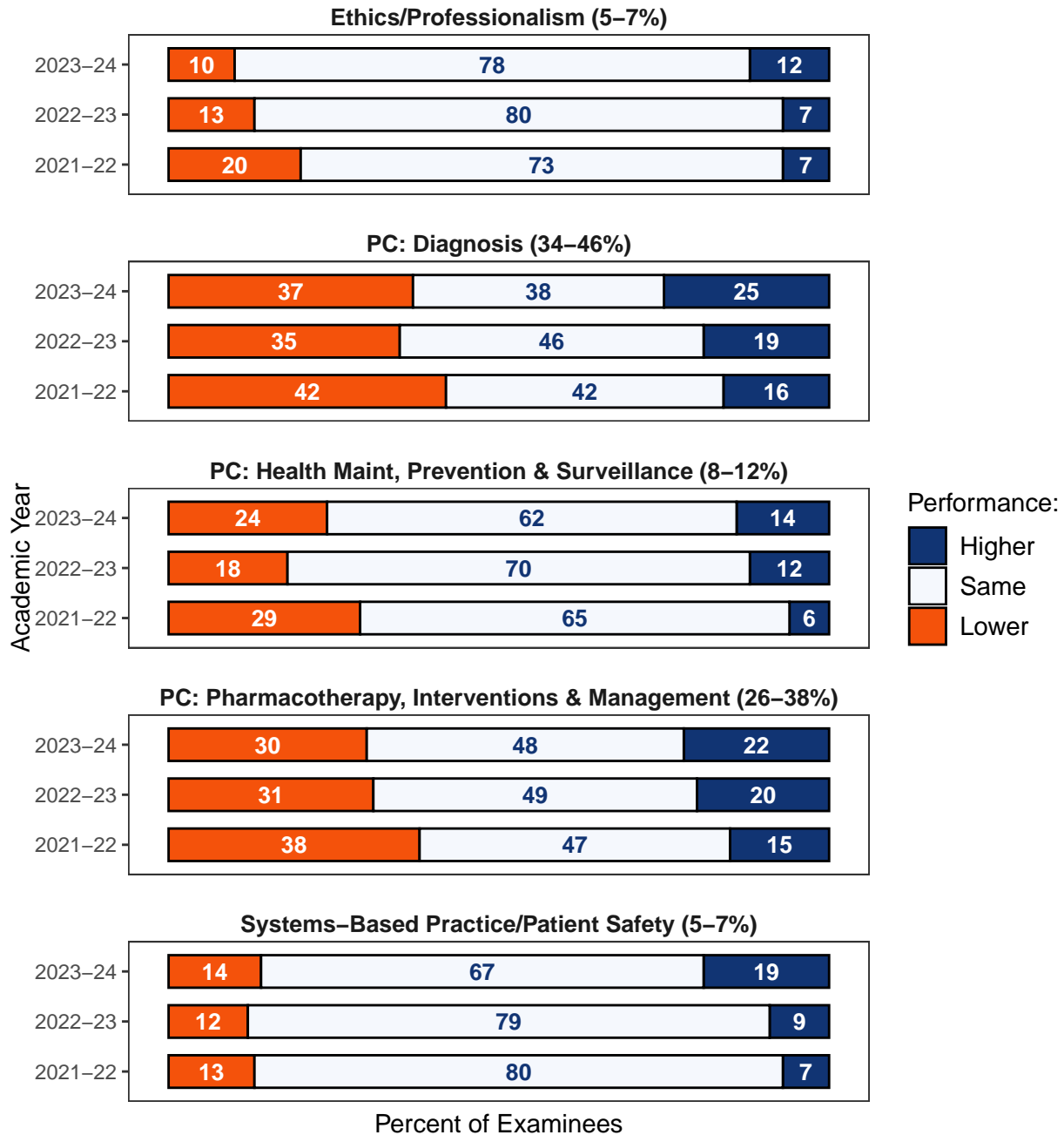
# United States Medical Licensing Examination<sup>®</sup>

## Step 2 CK Annual School Report

**Medical School:** U Colorado Denver School of Medicine

**School ID:** 006010

### Performance on Physician Task Categories Relative to National Average



**PC:** Patient Care