



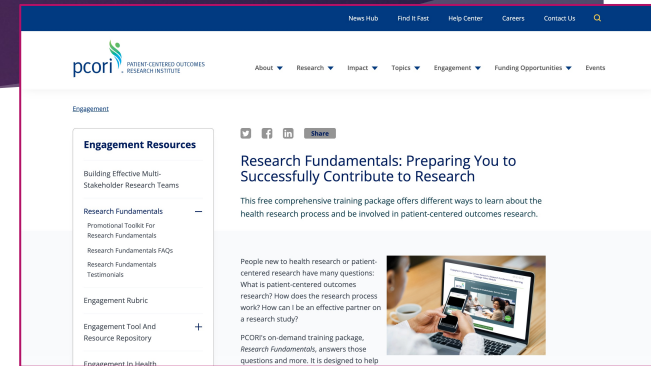
iSCORE Research Experience

SCHOLAR: ANOWARA BEGUM

MENTEE: KATHRINE BRASSELL

Background

- ▶ Fairly new to research, so focused on introduction to research process
- ▶ Learned the different study methods and utilized resources provided by Anowara to learn more about approaches to research
- ▶ Opportunity to attend research kick-off meeting
- ▶ Learned about Bangladeshi culture and compared to personal experience with Singaporean and American family
- ▶ Attempted to reach set “SMART” goal with Anowara



Research Methods

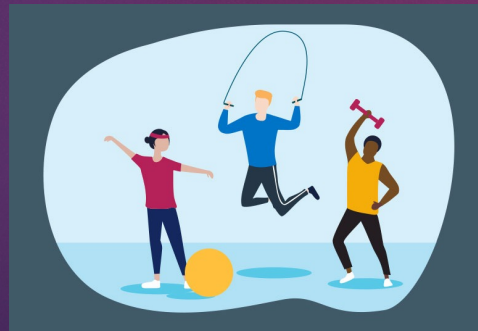
- ▶ Overview of types of research methods and step-by-step process in study design
 - ▣ Method Selection → Sample → Study Design & Sample Size Selection → Data Collection → Data Analysis
- ▶ Descriptive vs. Analytical Studies and Qualitative vs. Quantitative Research
 - ▶ Learned to differentiate and understand when to use/apply each
 - ▶ Process Mapping
 - ▶ Qualitative Data File Transcription
 - ▶ Different Statistical tests such as T Tests
- ▶ Data Collection & Analysis
 - ▶ Observational, Surveys, Interviews, Focus Groups, Experiments – secondary data analysis in Mixed Methods
 - ▶ Coding → "bucketing" results by themes (may introduce bias); listed and identified in code book

SMART Goals Approach



Anowara's SMART Goal – Walk 15 minutes 2-3 times a week

Kate's not-as-SMART Goal – Exercise at least 15 minutes everyday



- SMART goals approach for research methods
 - **S**pecific – addresses "What/how?"
 - **M**easurable – how often?
 - **A**chievable – is it possible?
 - **R**ealistic – is it possible to commit to?
 - **T**ime-bound – how long will it take?
- At beginning of experience decided to set 1 SMART goal each and measure until end

Pediatric MTM Study Kick-Off Meeting


- ▶ Opportunity to attend study kick-off meeting about project on Pediatric Medicine Therapy Management
- ▶ Overview of step-by-step study design process, flow of research, type of team members etc.
- ▶ Conciseness of presentations, attention to detail and how involved and formal presentations may be
- ▶ Interesting to see full layout in comparison to finance side of work
 - ▶ Found it funny that the “ice-breaker” question was about your “favorite statistical test”



Introductions

- Your name
- Your research interests / area of expertise
 - Your favorite candy
- OR
- Your favorite statistical test

ACCORDS
ACADEMIC COORDINATOR AND SUPPORT
RESEARCH AND QUALITY IMPROVEMENT
DEPARTMENT OF CHILDREN'S
ONLINE AND IN-PATIENT COORDINATOR



Cultural Exchange Aspect

- ▶ Huge part of experience between Anowara and me
 - ▶ Focused on comparing different cultural experiences, with more similarities than expected
 - ▶ Some shocking differences (in a good way), such as...
 - ▶ Anowara's mother insists on cooking all meals from scratch!
 - ▶ Learned about Ramadan holiday and traditions
- ▶ Bangladeshi wedding!
 - ▶ Opportunity to attend Anowara's wedding and experience traditional Bangladeshi wedding



What I Gained

- ▶ Fulfilling experience in both research and culture aspects
 - Learned more about myself through my culture along with Bangladeshi traditions and new perspectives
 - Gained valuable skills in understanding the research process and various study methods
 - Introduced me to a narrowed down introduction into the research world
 - Had a chance to receive helpful resources and guidance from a wonderful mentor (Anowara is awesome!!!)

THANK YOU!!!

► Special thanks to Dr. Anowara Begum for her mentorship; Dr. Cristina Cenciarelli and Elizabeth Evans, MSS, for their invaluable contributions in creating a platform that facilitates meaningful interactions and learning opportunities for students and scholars.

