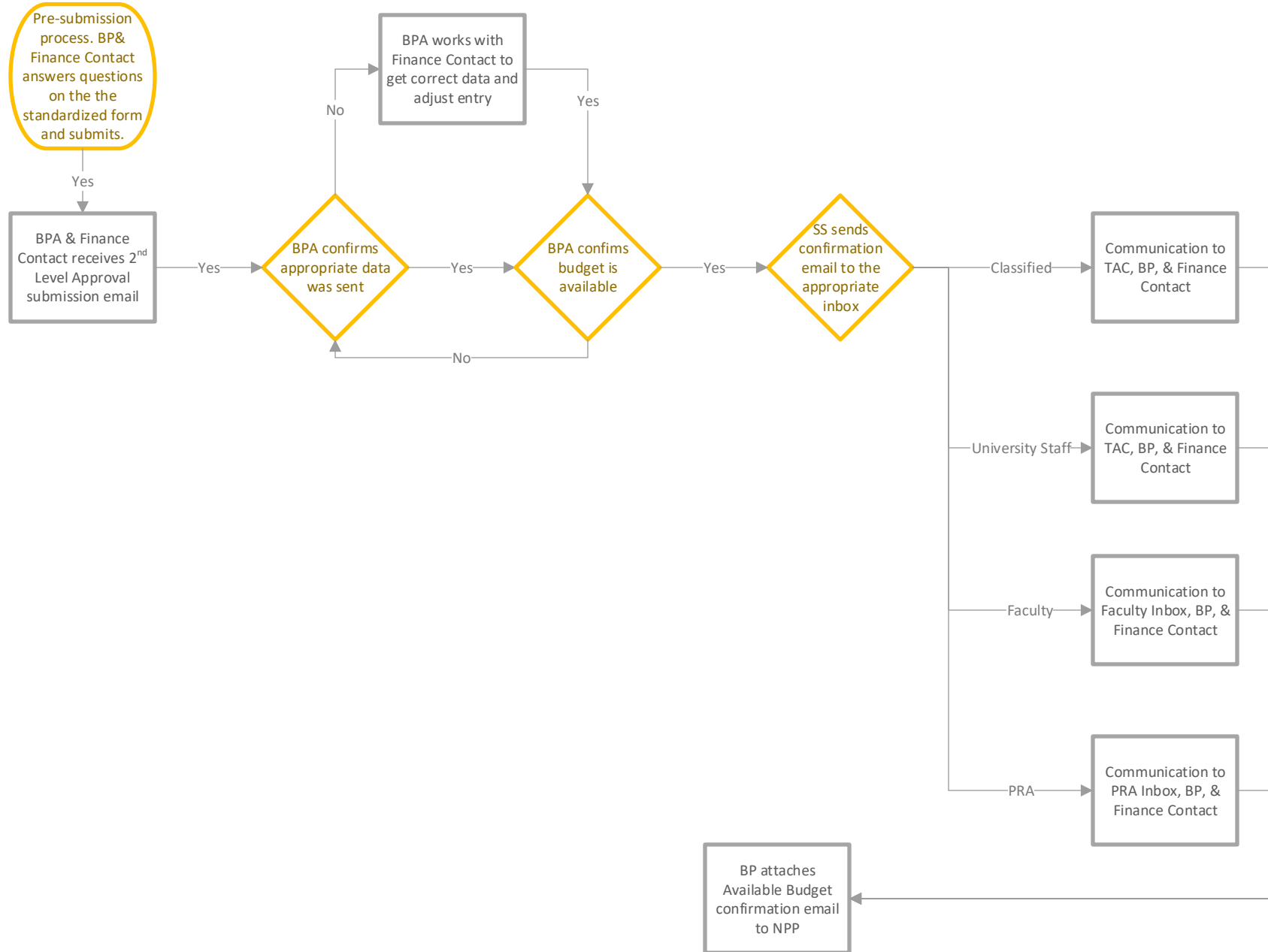


Anschutz Administration, Finance Dept, Chancellor's Dept, CSA, Health Affairs, and Research

** All positions funded fully or partially by funds 10, 11 or 36 need 2nd level budget approval**

Not New Positions & Promotions



BP = Business Partner
 BPA = Budget Planning and Analysis
 EVC = Executive Vice Chancellor
 VC = Vice Chancellor