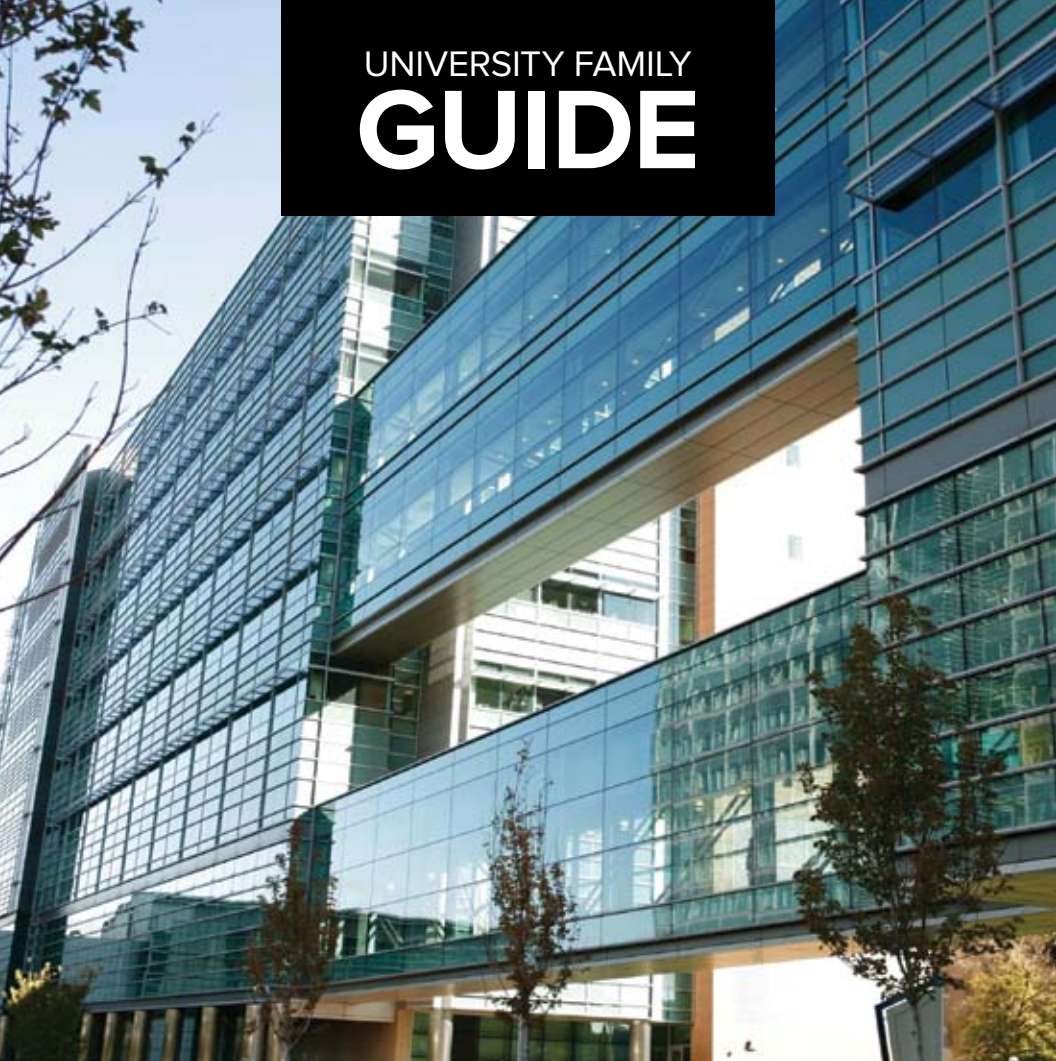


UNIVERSITY FAMILY
GUIDE



2011



University of Colorado
Anschutz Medical Campus

CAMPUS RESOURCES – LOCAL INSIGHT – HELPFUL INFORMATION

University Parent Media
3800 Arapahoe Avenue, Suite 210
Boulder, CO 80303
Phone: (866) 721-1357
Email: ask@universityparent.com

PUBLISHER
Sarah Schupp

VP OF OPERATIONS
Jon Saints

SALES REPRESENTATIVES
Allison Black
Rebecca Boozan
Mike Gooley
Scott Greisser
Sharon Haddad
Jon Hydeman

PRODUCTION DEPARTMENT
Grace Cassara
Eric Hosmer
Lee Riley
Meg Steinborn

OFFICE MANAGER
Linsey Straugh

DESIGNER
Ryan Pollard

FOLLOW US ON:

 facebook.com/collegeparents

 twitter.com/4collegeparents



The presence of the University of Colorado Denver Anschutz Medical Campus logos and marks in this Guide does not mean the school endorses the products or services offered by advertisers in this Guide.

Advertising Inquiries:
(866) 721-1357
ads@universityparent.com

©2011 University Parent Magazines, Inc.

University of Colorado Anschutz Medical Campus
Student Assistance Office
13120 East 19th Avenue
Box A-043
Room 3123 of Ed II North Aurora, CO 80045
www.ucdenver.edu/studentassistance
(303) 724-7686

About Our Guides

University Parent Media works closely with institutions around the country to bring together the most relevant, timely information into one all-inclusive resource.

We have published this guide with the mission of helping you easily navigate the university and its surrounding community. Ultimately, we hope these resources help nurture your connection and involvement in your student's college years!

Make the Most of Your Parent Guide

- Hang on to your Guide! Inside you'll find information that's useful all-year long, including important phone numbers, web sites and calendars.
- Store your copy in a purse or glove compartment for convenient reference.
- Pass it along to parents of prospective college students to promote the school.
- Please recycle when finished!
- Discover more content, tips and local business information by visiting us online at: www.universityparent.com/ucdamc



contents

4 | Campus Guide

Comprehensive advice, information for campus success

- 4 | Welcome!
- 6 | Welcome from the Student Assistance Office at the Anschutz Medical Campus
- 7 | Health Sciences Library
- 8 | Student Services Suite
- 9 | Tobacco and Smoke Free Campus!
- 10 | Housing Information
- 11 | How Students Receive Information from Campus
- 12 | Transportation
- 13 | Commonly Asked Parking & Transportation Questions
- 16 | Anschutz Medical Campus Map
- 18 | Student Health Insurance
- 20 | Get Involved!
- 22 | Student Success
- 25 | Student Academic Communities

26 | Denver - Aurora Community

Make the most of your visit by getting to know the area

- 26 | Welcome to Denver, the Mile High City
- 28 | 10 Things to Know About Denver

30 | Resources

Must-have knowledge to navigate your way

- 30 | Proud Supporters of UCDAMC

Welcome!

Dear University of Colorado Anschutz Medical Campus Family:

Welcome to the University of Colorado Anschutz Medical Campus. Our new state-of-the-art education, research and patient care facilities offer students unparalleled training in health professions. We encourage your student to take full advantage of the vast learning and professional growth opportunities on campus.

This Family Guide is intended to provide you with a variety of resources, amenities and information about the campus and surrounding communities. Included in this guide are a variety of university services and staff that are prepared to answer any questions you may have and direct you to valuable resources and available support.

On behalf of the University of Colorado Denver, I thank you for choosing the Anschutz Medical Campus and invite you to join us in supporting your student throughout their entire educational experience.

Wishing you and your family great success,

Samantha Ortiz, PhD

*Assistant Vice Chancellor for University Life/Dean of Students
Interim Associate Vice Chancellor for Student Affairs* ■



Only Apartments on Campus

- Walk to Class
- Free Parking
- Washer and Dryer Included
- 24-Hour Fitness Center
- Wireless Internet Café

Urban living just got smarter.



FITZSIMONS

2100 N. Ursula Street
Aurora, CO 80045

303.363.0021
www.paulsapartmentliving.com

Welcome from the Student Assistance Office at the Anschutz Medical Campus

The SAO is the 'central student services' office which offers a wide variety of student life and student success programs for all degree seeking students.

Students in the Colorado School of Public Health, Schools of Dental Medicine, Graduate Basic Sciences, Medicine, Pharmacy and the College of Nursing as well as the Child Health Association/Physician Assistant and Physical Therapy programs all may receive assistance through this office. If we don't house a particular service your student needs, we know who does!

This handbook offers a quick snapshot of services that those who are 'attached' to a student may find useful to know about – we want to help your student make a smooth transition to life at this rigorous graduate and professional campus! If you would like to receive this information electronically, send us an email. The electronic version will have live links to the websites and email addresses included in this document.

The Student Assistance Office is located in Ed II North, on the 3rd floor.

Kimberly's realm is the front desk in the Student Services suite. Lia is nearby in 3204, and Cheryl is in 3101 just down the hallway. Whatever you need, stop by and visit with one of us – we'll be able to get you situated on the right path. Whether you're visiting with a student, or are now one of our own, we hope you enjoy your time here!

QUICK TIP!

There are a lot of email addresses and websites in this handbook – it takes just a minute to add these to your FAVORITES or CONTACTS in your electronic gear – make your contacts make sense – i.e. LOCKERS vs. Educational Support, or FIND CLASSROOM vs. Educational Support.

Do this BEFORE you begin to have a lot of questions that are program-specific – the information in this handbook and in the Student Life Handbook (which is located on the Student Assistance Office website) is provided by the central administration that offers student services to all students at the Anschutz Medical Campus.

Enter in several of these website/email addresses so you can function without trying to remember where all the good information is!

Cheryl A. Gibson, Director
(303) 724-7684
Cheryl.Gibson@ucdenver.edu

Lia Nelson-James, Coordinator
(303) 724-7686
Lia.Nelson-James@ucdenver.edu

Kimberly Bohman, Administrative Assistant
(303) 724-2866
Kimberly.Bohman@ucdenver.edu

www.ucdenver.edu/studentassistance
(303) 724-7685 FAX ■



Health Sciences Library

The Health Sciences Library is the largest biomedical research library in Colorado.

The building is very user-friendly with ample natural light, a café, a gallery, outdoor patios, thirty group study rooms, and plenty of comfortable study areas. Wireless access is available throughout the building as well as 50 workstations. Most of the library's resources are available online and can be accessed by eligible users from any computer on the Internet. The Health Sciences Library provides online access to over 30,000 journals and hundreds of databases. Librarians can meet with users one-on-one, in classes, online or via the phone to assist with their information needs. ■

Student Services Suite

We pack a lot of service into one wing of Ed II North. The Student Services Suite, which is located in 3123 of Ed II North (and has **STUDENT SERVICES** in large lettering above our front seating area) includes:

Bursar/Cashier services

Hours: Monday through Friday, 8-5 p.m.

Financial Aid

Hours: Drop off paperwork 6 a.m. – 6 p.m. in lockbox in front suite area
Counseling Hours M, T, W, F 8-3 p.m.,
Thursdays 8 a.m. – 1 p.m.,

AMC Office of Diversity and Inclusion

Hours: Monday through Friday, 8-5 p.m.

Registrar

Hours: Monday through Friday, 8-5 p.m.

Student Assistance Office

Hours: Monday through Friday, 8-5 p.m.

Student Health Insurance Office

Hours: Monday through
Friday, 7:30-3:30 p.m.

When your student needs assistance from one of the areas listed above, they should start by checking in with the front desk. ■

QUICK TIP!

Much of a student's information about their academic progress, financial situation, health issues, etc. are protected by a variety of privacy rules, regulations and/or the law.

In these cases, family members/significant others cannot access this information, and staff/administrators at the campus will not discuss this information with anyone except the student who 'owns' the information.



Tobacco and Smoke Free Campus!

The Anschutz Campus is Tobacco and Smoke Free.

The policy can be viewed at: www.ucdenver.edu/faculty_staff/Tobacco/Documents/AMC%20Tobacco-Free%20Policy.pdf

Policy: All persons on the Anschutz Medical Campus are prohibited from smoking products including, but not limited to, cigars, cigarettes, pipes or any device or material which is lighted and inhaled. Smokeless tobacco products such as chewing tobacco or snuff are also prohibited.

Implementation: Individuals observed smoking or using tobacco products on the campus will be informed of the policy and asked to stop. Continued violation of the policy may result in disciplinary action, according to processes specific to faculty, staff and students. ■

Housing Information

The University's housing website, which lists current vacancies in the Denver-Metro area (including Aurora) is located at www.places4students.com. Landlords are responsible for updating their vacancy information on a regular basis. Some rental property information is posted on bulletin boards in the Student Services suite in Ed II North (room 3123).

Roommate Information is available by email or by picking up current lists from the Student Assistance Office – feel free to email Kimberly.Bohman@ucdenver.edu directly. After we are able to confirm that your student is an incoming or current student, we'll release the roommate information to them. The Roommate information is held off-line. We list only Anschutz Medical Campus students on our roommate lists, and disseminate the lists only to Anschutz Medical Campus students. ■



How Students Receive Information from Campus

Students receive information from campus via post when original documents are necessary.

A very LARGE portion of communication is in the form of email – a student must check their University email (firstname.lastname@ucdenver.edu) often. The University will NOT email students using the student's alternative email address – all email notification from Financial Aid, Registrar, etc. will go to the @ucdenver.edu email address.

Several lists exist by which activities, safety alerts, other information is sent in a broadcast fashion. Students may unsubscribe from some of these lists, but not others.

The Campus Emergency Alert system and how to sign up for notifications can be found on the University Police website at www.ucdenver.edu/police. Students may choose several media by which to receive information (cell phone, email, text messaging). Browse through the University Police website for more information on emergency preparedness, self-defense, and more!

Campus Closure Information: in the event of severe weather or other events which may require campus closure, log in to www.ucdenver.edu/alert or call (877) INFO-070 (or (877) 463-6070). ■

FITZSIMONS LANDING

Your Home Away From Home.

Refreshing Outdoor Pool – BBQ & Picnic Areas
Laundry On-site – Ample Parking
Dedicated Service & Management Team

Mention this ad for \$100 OFF first month & only pay a \$59 Deposit!

13686 E 14th Ave #207
Aurora, CO 80011
(888) 604-9281
www.fitzsimonslanding.com

Transportation



Bus Pass Information

The RTD College Pass is available to all active (enrolled) degree seeking students (including the Dental ISP Program, Dental Perio and Ortho residency programs).

The pass is supported by a mandatory, student use fee of \$42.90 per semester that the degree seeking student is enrolled. This fee will increase to \$48.35 beginning Fall 2011. This fee may increase (per the referendum passed in November 2008) each year, up to a maximum of \$60/semester before going back to the students to be re-approved by another referendum.

The College Pass includes ALL regional, local, express, LightRail, SkyRide and Call-N-Ride services – all these are included FREE – no additional charge beyond the College Pass fee. Services NOT included are the special services such as Access-A-Ride and the sports rides.

For new students, the College Pass will be distributed by the Badging / Security Office during matriculation/

orientation. Students will be scheduled for their student ID Pictures, and the RTD College Pass ID will be prepared and distributed at the same time. New students cannot get a pass before their actual matriculation into their program.

For continuing students, the updated RTD College Pass stickers will be distributed by the Student Assistance Office in 3123 of Ed II North. Announcements will be sent via email with instructions on picking up the College Pass ID.

Non-degree seeking students are not eligible for the RTD College Pass. Certificate students are not considered degree seeking at the Anschutz Medical Campus, and are not eligible for the College Pass. Eligibility will be determined by the Student Assistance Office.

Parking

The goal of the Parking and Transportation Office is to provide high quality, customer-oriented parking and transportation services by ensuring a safe and user friendly system that operates at optimal efficiency.

We would like to provide you with some valuable details in regard to parking while on campus. We also encourage you to visit our office or website listed below.

Parking and Transportation Services Office
First Floor of Building 500 - West of the Bookstore and Food Court Seating Area

- Hours: Monday - Friday 7:30 a.m. – 4:30 p.m. (Offices are closed on weekends and Holidays)
- Phone number: (303) 724-2555
- Website: www.ucdenver.edu/facilities/parking ■



Commonly Asked Parking and Transportation Questions

Your student may have several questions about Parking at the Anschutz Medical Campus – most of those are addressed here!

How much do I pay for parking?

Student parking is \$36/ month. Short term weekly parking is \$10/week.

How do I pay each month?

You can pay in the Parking Office each month by cash, credit card or check. By the Fall Semester 2011 you will be able to pay your parking on line at the parking website.

Can I pay for more than one month at a time?

You can pay for one month, multiple months or a full semester. Monthly parking can be prorated for half of a month as well. The cutoff date is the 15th of the month.

What if I don't want to sign up now but decide I want to a later date?

Parking can be arranged at anytime. However, the monthly rate is only prorated for half month increments.

How do I cancel my parking?

You must notify the Parking Office in advance of your intent to cancel parking. If you do not notify the Parking Office you will continue to be billed.

Do I get a parking access card for my car?

Parking access is added to your Student ID. Upon entering the gate to the parking lot simply wave your ID a few inches away from the reader. The gate will open. ►

What if I have more than one vehicle that I will drive?

Notify the Parking Office of any additional vehicles. They will be added to your account.

What if my friend and I want to share parking?

Carpool parking is available. You must sign up for a carpool badge in the Parking Office. All carpool participants must be registered in the carpool. You will receive a carpool parking card. The parking access will not be on your ID Badge. The carpool 'card' will allow for 24/7 access to all permit lots. Other carpool participants must present their ID in person at the Parking Office.

What do I do about parking if I forgot my ID Badge?

You should park in a visitor parking lot and notify the Parking Office immediately. They will verify your account and you will not be issued a citation that day.

I arrive later in the morning to campus - what if I cannot find a space?

There is more than adequate parking available on campus for the permit holders. However, sometimes the most desirable parking space may not be close your destination. The permit parking lots that will typically have available parking later in the mornings are Evergreen, Leadville and the Henderson Parking garage. In the worst case, if all parking is truly taken, and can be verified by parking staff, you may park in a visitor lot – however you must notify the Parking Office immediately to avoid being issued a ticket.

Are there any general guidelines to having permit parking?

Following a few of these simple parking rules and regulations will help to ensure you do not experience difficulties when entering or exiting the parking lots.

Allow only one vehicle per card access into the parking lot. Following too close or “tailgating” into a parking lot behind another vehicle will cause in difficulties or delays upon trying to exit. If the gate will not open when you present your ID badge please do not try to push the gate open manually but rather park in a visitor lot and immediately notify the Parking Office of your dilemma. If you are already in the parking lot and trying to exit please call the Parking number posted at every exit.

Use only the designated drive paths in and out of parking lots. Other methods could potentially damage landscape areas, curbs and/or sidewalks.

Park within the designated lines of the parking lot to help maximize the use of the parking spaces for everyone on campus. Aisle ways and rows are designed to allow a safe flow of traffic in and out of the parking lot. The widths also allow emergency vehicles when necessary. For these reasons, please do not park at the ends of rows or aisle ways.

Your parking access is assigned to your ID badge only and is intended for your use exclusively.

If you are ever unsure about a parking issue contact the Parking Office right away.

For additional information please see the [Parking and Transportation website](#) or contact the [Manager of Parking and Transportation at Kerrie.Bathje@ucdenver.edu](#)

Biking

Bike racks are available near the entrances to all major buildings on campus. Enclosed bike lockers are located on the ground floor of the Henderson Parking structure, and



are available for daily use only, on a first-come, first-served basis.

Students are encouraged to register their bicycle with University Police – in the event of a theft, this can help get your bike returned to YOU if it shows up in a pawn shop, found abandoned, etc.

Car Pool Information

You may post your information in the Parking/Transportation Office on bulletin board/s on either campus.

RTD also assists with Carpooling information on their website with RideArrangers www.RTD-Denver.com A relatively new system for the Anschutz Medical Campus is <http://zimride.ucdenver.edu>

This secure network uses your @ucdenver.edu email address to let you share your commute information with your colleagues. “I was able to find matches immediately,” said Kerrie Bathje, Parking and Transportation Manager. “Zimride did the matching, it was really easy!” <http://zimride.ucdenver.edu>

It's simple. Have a car? Add your ride offer and split the costs by driving with friends and colleagues. Don't have a car? Add your ride request and find a ride. Just register for a free account and post where you're coming from and when. Zimride will help you find others making similar trips.

Many people have flexible schedules. With Zimride you can even find someone for occasional carpools. Join Zimride today and start saving!

Parking for Persons Who Are Disabled

Each lot has parking spots designated for handicap access. Call the Parking Office at (303) 724-2555 for additional information.

Other Parking Options

Visitor and daily-pay lot maps can be found at www.ucdenver.edu/ABOUT/DEPARTMENTS/FACILITIESMANAGEMENT/PARKINGMAPS/Pages/ParkingMaps.aspx Permit lots are also mapped at this site.

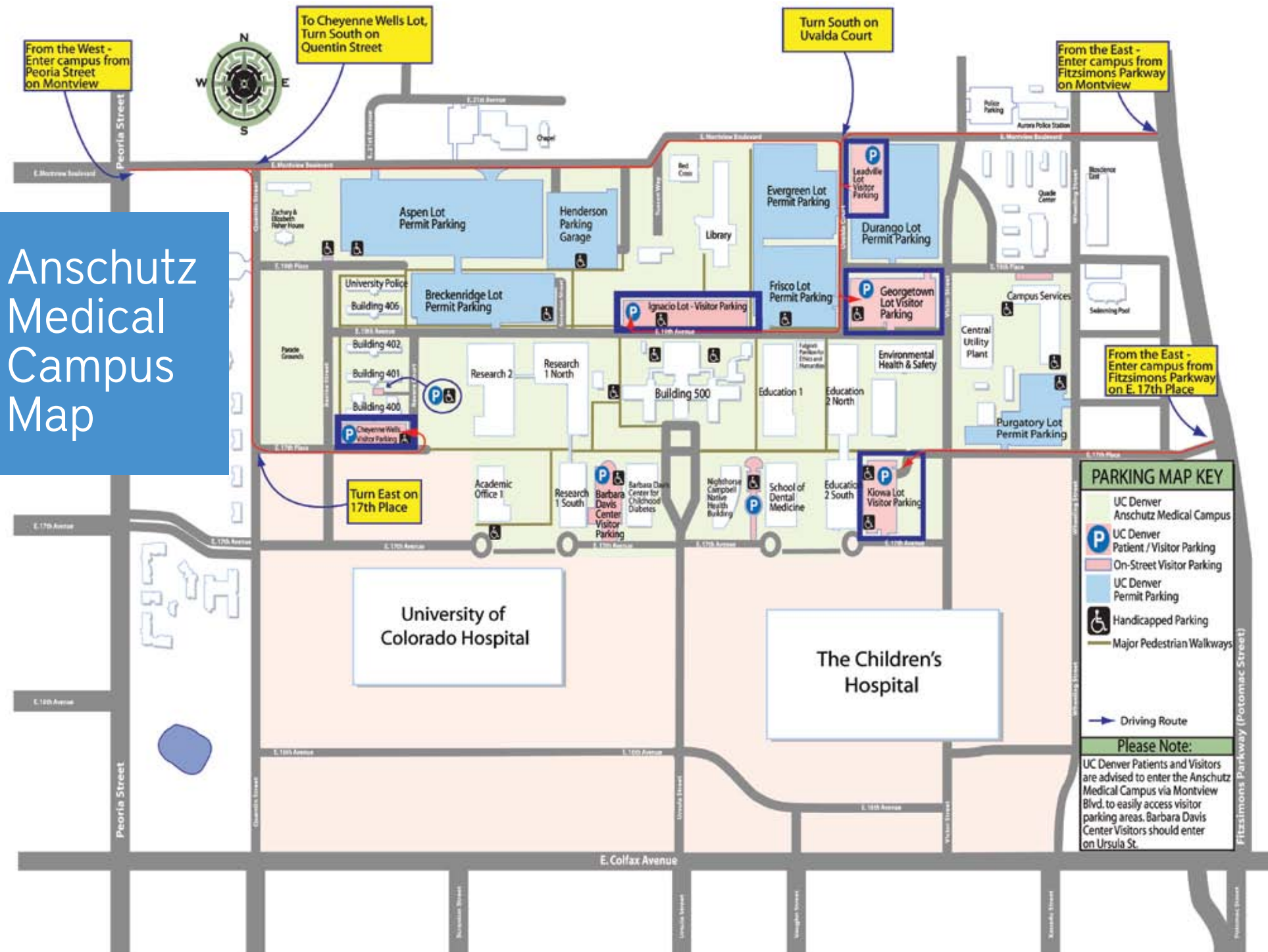
Night and Weekend Parking at the Anschutz Medical Campus

Students who work nights and weekends on the Anschutz Medical Campus, or have business at the campus after hours, have the option of free access to the gated parking lots if they did not already participate in the parking program (students paying for parking have 24/7 access to gated lots).

After Hours access begins at 6PM and ends at 5:59 a.m. the following day. You may be ticketed if you enter a permitted lot at 5:59 a.m., and remain in the lot during regular business hours.

Those who do not pay for a parking permit and would like night and weekend access to the gated lots must still register in order to have their UCD ID badge activated to allow entry into the parking lots. There is a \$10 charge to activate your Anschutz Medical Campus ID for this after-hours program. Please visit the Parking Office to fill out a registration form.

Please bring your Anschutz Medical Campus ID badge and complete description of your vehicle including license plate number when you register for any of the parking options listed above. ■



Anschutz Medical Campus Map

Student Health Insurance

The Anschutz Medical Campus, while concerned with educational pursuits, is aware of varied student needs in other areas - including the area of health. The Student Health Insurance (SHI) Plan is designed to provide students with health care coverage offering a PPO accident and sickness health plan.

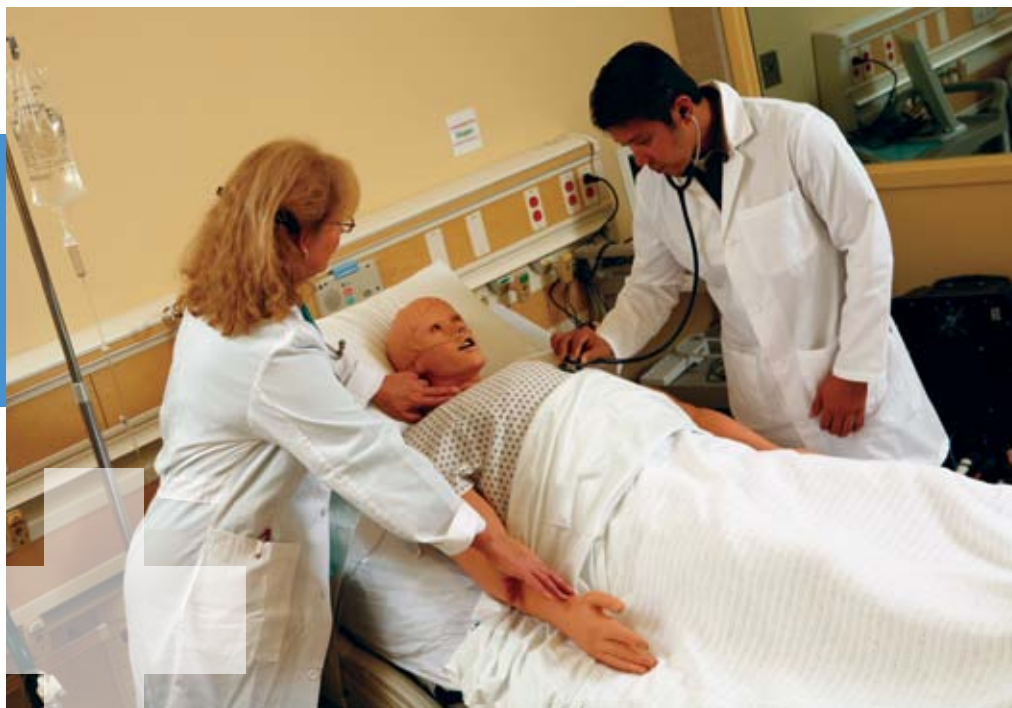
Please refer to the Student Health Insurance website www.ucdenver.edu/amcstudenthealth for complete information regarding the Student Health Insurance Plan.

The Student Health Insurance Office is located in room 3208 of the Student Services suite (3123 in Ed II North) (303) 724-7674.

All students enrolled in 5 or more credit hours are required to carry comparable medical insurance coverage or enroll in the Anschutz Medical Campus Student Health Insurance Plan.

Please review the brochures for details of the plan's coverage at www.ucdenver.edu/amcstudenthealth. If you have any questions about the plan's coverage after viewing the plan design, please contact the Student Insurance Office (303) 724-7674.

If you are not interested in purchasing the Anschutz Medical Campus Student Health Insurance, you must fill out and return the Waiver/Enrollment form by deadline date posted on the form. Please read the



Take Care of Those Relationships! Sooner than Later!

Our students often arrive at the Anschutz Medical Campus with a significant other in their lives. It is often a BIG surprise to all parties just how busy students are while enrolled in their respective programs. Consider the student responsibilities at this campus as a full time job, with required overtime (nearly every day). Relationships are complicated, and need nurturing – we hope to help with counseling referral, activities which include families, and other resources to help not only with the transition to this campus, but throughout your student's enrollment here.

Please stop by, or call the Student Assistance Office for additional resources.

form carefully and provide the necessary information – it will not be processed without all the required information. The Waiver/Enrollment form is also available at www.ucdenver.edu/amcstudenthealth

If you have any questions about the Student Health Insurance Plan, or the process for waiving the Student Health Insurance plan, please feel free to contact the Manager of the Student Health Office, LaVerne Loechel at (303) 724-7674.

Mental Health / Counseling Services
A student's health and well being is a primary concern for all student affairs offices, as well as other offices which regularly interact with students.

If a student has been seeing a professional for counseling, or psychiatric care, it is important to find another provider right away so the student can continue to receive care. This can be done several ways:

- Students can ask their current provider for names of local providers – the student should then

follow up and find out if the provider accepts the students' selected medical insurance coverage.

- Students may make an appointment with Lynne Fenton, MD, who is employed at the Anschutz Medical Campus in the Student Mental Health Center – she can assist in finding providers for students regardless of their selected insurance coverage (Anschutz Medical Campus Student Health Insurance or other coverage) (303) 724-4719

- Students may visit the Student Health Insurance office (3208 of Ed II North) for assistance in finding providers who accept the Anschutz Medical Campus Student Health Insurance plan.

Students who have selected other carriers will be assisted by referencing their carrier websites which often have 'find a physician' search engines ■

(303) 340-3343

FitzsimonsCU.com





Get Involved!

We welcome students to Get Involved in student organizations, campus governance, the student academic communities, whatever they please!

Not only will they have fun, meet more students in their program/across campus, but they'll further their opportunities for professional development!

A great way to learn about many of the student organizations is to use the time at each program's orientation to check out the information provided there (check to make sure there is room for family members to attend – there may be additional events to which family members are invited specifically).

If that's not enough, your student may join Student Senate for its annual WELCOME events in the Fall – Senate provides a series of events that are geared to get the attention of all incoming and continuing students! Many Student Organizations attend this event to sign up new members and distribute information on their activities planned for the academic year. Program specific

student organizations will present their information during orientation events near the start of the student's first term.

The Student Assistance Office website www.ucdenver.edu/studentassistance has a 'master list' with descriptions and leadership of all student organizations.

The campus wide student governance group is Student Senate. Senate's website is located at www.ucdenver.edu/studentsenate

Senate also lists Philanthropic and Outreach Opportunities Off Campus – reading programs for K-12 settings, tutoring, Habitat for Humanity events, Sports Saturdays at Paris Elementary, Paris Pals (pen pal club), etc. Check out the Philanthropy and Diversity pages of the Senate website.

Senate also has a Professional Development Assistance program – students who go to conference/ other non-curricular learning and professional development events may request reimbursement of expenses up to \$100/year.

Each school / program has its own council as well, which interacts with the school/program-specific student organizations and interest groups. These are listed on the SAO website in the master list with their current leadership, as well as individually throughout the school and program websites.

Intramural Sports and Recreation

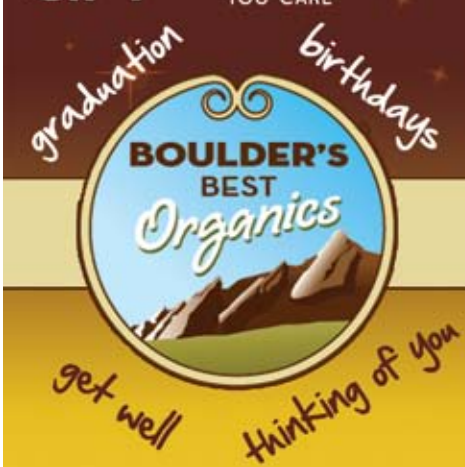
Yes, our students still have time to play! The Anschutz Medical Campus offers a variety of intramural sports, some in cooperation with the Downtown Campus.

- **Flag Football** – commissioned by Anschutz Medical Campus students
- **Basketball** – co-ed, and men's - commissioned through the Auraria Higher Education Center (Denver Campus)
- **Volleyball** – co-ed – commissioned through the Auraria Higher Education Center (Denver Campus)
- **Softball** – co-ed - commissioned through the Auraria Higher Education Center (Denver Campus).

Some students form teams to participate in city leagues (typically Denver and Aurora). Ice Hockey – we have had student teams play at the Big Bear Ice Arena – ice time is EXPENSIVE for league play – team sponsorship is always welcome! We already have the hockey jerseys (enough for two teams). If your student is ready to help re-awaken Ice Hockey, feel free to let the Student Assistance Office know! ▶

GIVE A BETTER GIFT™

AND LET YOUR STUDENT KNOW YOU CARE



Distinctive eco-friendly gift boxes for your student featuring organic Colorado-grown brands.



303.499.6742

www.BoulderBestOrganics.com

10% OFF WHEN YOU USE CODE **PARENT10**

Here's a quick list of Student Organizations by program:

CHA/PA
 PA Student Council
 Silver Society
GRADUATE SCHOOL
 Graduate Student Council
 Alternatives in Science
 Immunology Graduate Student Board
MEDICAL SCHOOL
 Medical Student Council
 All About Couples
 American Medical Students Association
 Anesthesia Interest Group
 Colorado Medical Society –
 Medical Student section
 Disability Dialogue
 Emergency Medicine Interest Group
 Family Medicine Interest Group
 Health Disparities Interest Group
 Internal Medicine Interest Group
 Medical Humanities Interest Group
 Medical Students for Choice
 Nutrition and Preventative Health Interest Group

Ob/Gyn Interest Group
 Oncology Interest Group
 Ortho Student Interest Group
 Pathology Interest Group
 Pediatric Interest Group
 Physicians for Human Rights
 Spanish Acquisition Begets
 Enhanced Service (SABES)
 Students Interest Group in Neurology
 Student National Medical Association and National
 Network of Latin American Medical Students
 Surgical Society
COLLEGE OF NURSING
 CU Student Nurses Association
 Nursing Student Council
PHYSICAL THERAPY
 Class Officers and Committees
PUBLIC HEALTH
 CSPH Student Council
SCHOOL OF DENTAL MEDICINE
 Dental Student Council
 American Dental Education Association

American Student Dental Association
 American Women's Dental Association
 Alpha Omega
 Delta Sigma Delta
 School of Pharmacy
PHARMACY STUDENT COUNCIL
 American Society of Consultant Pharmacists
 Pharmacists for Christ
 Asian-American Pharmacy Students
 Asian-American Pharmacy Students Association
 APhA - Academy of Students of Pharmacy
 Colorado Student Society of
 Health System Pharmacists
 Kappa Epsilon
 National Community Pharmacists Association
 Phi Delta Chi – Sigma Chapter
 Phi Lambda Sigma
 Rho Chi Alpha Theta Chapter
 Student National Pharmaceutical Association
**INTERDISCIPLINARY STUDENT ORGANIZATIONS
 (3 OR MORE PROGRAMS PARTICIPATING)**
 Anschutz Medical Campus Student Senate
 Arrhythmias – a cappella singing

**BRANCH – Bridging Research and Aurora
 Neighborhoods for Community Health**
 Catholic Medical Association
 Christian Health Fellowship
 CU Chapter of the IHI Open School
 Complementary Alternative Medicine
 Student Interest Group
 Geriatric Health Student Interest Group
 Health Action Collaborative
 Health Professionals for Environmental
 and Social Responsibility
 Latter Day Saints Student Association
 Students for Global Health
 Orchestra – Melomania
 Outdoor Club
 PRISM (GLBTI)
 Reproductive Health Interest Group
 UCDenver Cycling Team (Club
 Sport – Division 2 UCCA) ■

Send a Party In A Box
 It's the box that talks!
The only gift box that comes with a personally recorded message!
 It's just like being there to celebrate, even if you can't!
 The Party Box includes a personalized recorded audio message and printed greeting card, celebration music, choice of cake, necessary utensils, noisemakers, birthday hat and battery operated candle. It's a great way to celebrate any special occasion!
Go Ahead. Be A Gigglemaker!
 Visit itmakesmegiggle.com
 or call (866) 468-5441

The box plays a song & your recorded message...
 Way to go Matthew! Congratulations!

if makes me giggle

Windows® Life without Walls™ Dell recommends Windows 7.

UC Denver Anschutz Medical students get the best price on consumer PCs from Dell*

If you find a better price on your day of purchase, contact a Dell University sales specialist and we will beat that price.

Inspiron™ duo
 Switch from touch to type in seconds.
 • Genuine Windows® Home 7 Premium
\$599.99

Your PC, simplified.

Dell.com/dellu/ucdenver Member ID: US28484962

*BEST PRICE GUARANTEE does not apply to retail or reseller offers, Dell Outlet, affiliate websites, coupons, auctions or quotes from Dell sales representatives. You must present a valid E-value code or saved cart image with lower price to Dell U sales specialist on day of purchase prior to your transaction.

Student Academic Communities



Student Success!

We want students to be the best they've ever been during their tenure here! To help them reach their full potential, many services are available for their use.

Disability Resources and Services Office

The Disability Resources and Services Office (DRS) serves the needs of a large and diverse community of students with disabilities who attend the University of Colorado Denver (Denver Campus & Anschutz Medical Campus). The DRS staff has a strong commitment to equal access and oversees the provision of accommodations for students with disabilities. The DRS staff also works closely with faculty and staff in an advisory capacity assisting in the development of reasonable accommodations that allow students with disabilities to demonstrate their abilities.

For assistance and/or information, please contact our office located in Building 500 of the Anschutz Medical Campus, Room W1103 (West wing of the first floor, Room 1103) or Phone: (303) 724-5640 Fax: (303) 724-5641 via email at Sherry.Holden@ucdenver.edu

Tutoring/Learning Assistance

Learning Assistance/Tutoring for the basic/biological science coursework is available through the Student Assistance Office located in Room 3101 in the Student Services suite of Ed II North (3123). If a student needs help, or can give help as a tutor, they should contact Cheryl Gibson, Director of the Student Assistance Office, at (303) 724-7684 or via email Cheryl.Gibson@ucdenver.edu

Tutoring is FREE if a student has been referred by a faculty member/student affairs office. If students wish to hire tutors for review work (alone, or with a study group!) they may use the tutors through the Student Assistance Office, but must pay them out of pocket. Currently, tutors earn \$15/hour for one-one tutoring, and \$25/hour for group review sessions. Students may also contact their own program regarding the availability of program-specific tutoring for skills courses, additional enrichment programs (study skills, test taking strategies, etc.) ■

At the Anschutz Medical Campus there are eleven themed Student Academic Communities (SACs). These are interdisciplinary interest groups led by student liaisons to further professional development and interdisciplinary interaction across the campus community. The SACs collaborate to bring the campus exciting, significant, and professionally relevant information that augments the regular curriculum.

Each community utilizes an assigned space on campus where students can pick up information on current events, student organizations, or just kick back and visit with other students. Students are invited make coffee, store lunches in the refrigerators and kitchenette areas, and make any of the communities their place for relaxation and socialization throughout the day. Student Liaisons are hired by the Student Assistance Office, and are supported in their programming efforts by the Student

Assistance Office as well as the REACH program which is responsible for the Interprofessional Education portion of the health professional curriculum.

If families have resources available to help sustain this co-curricular effort for the campus, feel free to contact the Student Assistance Office directly, so we can utilize your knowledge, skills and other resources for the professional development of our students at the Anschutz Medical Campus.

The themes for the SACs are:

- Acute Care
- Bioethics and Humanities
- Complementary and Alternative Medicine
- Diversity and Health Care
- Fitness/Wellness
- Geriatric Health
- International Health
- Oncology
- Rural Health
- Urban/Underserved
- Women's Health

Each School/College/Program also has a Community, including:

- CHA/PA
- Dental Medicine
- Graduate Basic Sciences
- Medicine
- Nursing
- Pharmacy
- Physical Therapy
- Public Health ■



Denver from City Park. Photo: Ron Ruhoff for the Denver Metro Convention & Visitors Bureau

Welcome to...



Located on high, rolling plains at the base of the spectacular Colorado Rocky Mountains, Denver is one of America's youngest cities – and one of the fastest growing. In the 1990s, the metro area grew by more than a thousand people a week, climbing to a population of nearly 3 million.

Denver receives 300 days of sunshine a year, more annual hours of sun than San Diego or Miami Beach. The mountains are just a short drive away, offering incredible adventures like white water rafting, narrow gauge steam locomotives, fly fishing, hiking, horseback riding, gambling in Old West mountain mining towns, quaint Victorian villages, luxurious five star resorts and camping in more than a dozen national parks, monuments and forests.

Today, Denver is the entertainment, shopping, cultural and sports capital of the vast Rocky Mountain West. The heart of the city is the 16th Street Mall, a mile long

pedestrian promenade lined with 28 outdoor cafes and 50,000 flowers. Free shuttle buses stop on every corner making everything in downtown easy to reach.

The Brookings Institute selected Denver as the fourth “most walkable” city in America, and it's easy to see why. The southern end of the Mall is Denver's cultural center with the Colorado State Capitol, Colorado History Museum, Denver Public Library, Denver Art Museum and U.S. Mint all nestled around lovely Civic Center Park. At the northern end of the Mall is LoDo, Denver's hip historic district where 26 square blocks of Victorian brick buildings have been converted into restaurants, brewpubs, music clubs and rooftop cafes. Nearby are

Coors Field, home to the Colorado Rockies, and the Pepsi Center, the 20,000-seat arena for the Denver Nuggets and Colorado Avalanche.

Along the South Platte River is the Downtown Aquarium with its collection of sharks and tigers and Elitch Gardens, a combination theme park and water park with more than 40 thrill rides. A trolley runs along the river to nearby INVESCO Field at Mile High, the home of the Denver Broncos.

Denver has the largest city park system in the nation with 200 parks in the city and 850 miles of paved, off-road bike paths. The city's famed mountain park system includes Red Rocks Amphitheatre, a 9,000-seat arena carved out of sandstone, has hosted everyone from the Beatles to Bruce Springsteen, and Buffalo Bill Grave, located high on top of Lookout Mountain.

The city also one of most popular zoos in the nation, the incredible Denver Museum of Nature & Science and the Denver Performing Arts Complex – the second largest arts center in America with 10 venues seating 10,000 people.

For more information, please visit our Visitor Information Center on 16th Street and California which has hundreds of free brochures and maps, or visit our Web site: www.VISITDENVER.com.

Welcome to the Mile High City!

Richard Scharf
President & CEO, VISIT DENVER ■

10 Things to Know About Denver

Interesting facts about what makes Denver unique

1. Denver has 300 days of annual sunshine.

Located east of a major mountain range, Denver has a mild, dry and sunny climate with more annual hours of sun than San Diego or Miami Beach. In winter, Denver is dryer than Phoenix with an average daily high of 45 degrees in February. Golf courses remain open all year and have been played as many as 30 days in January. Denver receives only 14 inches of precipitation a year – about the same as Los Angeles.

2. Denver's arts and cultural scene is thriving.

In its Old West days, Denver had a performance of Macbeth before it had a school or a hospital. That performance took place in a saloon. Today, Metro Denver collects more for the arts on a per capita basis than any other city. The seven county Denver metro area has a self-imposed 10th of a cent sales tax for the arts that raises more than \$40 million a year, which is distributed to 300 arts organizations and facilities.

The city's cultural renaissance can be found in places like the Denver Performing Arts Complex. Covering four square blocks, the complex is the second largest in the country, with 10 theatres seating more than 10,000 people for opera, symphony, ballet, Tony Award-winning theatre and touring Broadway shows. The \$92-million Ellie Caulkins Opera House is recognized as one of the finest acoustical venues in the world and Denver voters recently approved a \$90 million refurbishing of Boettcher Concert Hall.

Denver has currently added art museums including the Denver Art Museum's astonishing new Hamilton Building, designed by world famous architect Daniel Libeskind, and the new Museum of Contemporary Art designed by David Adjaye. This is his first building in the United States.

3. Denver is near the mountains, not in them.

Denver is located on high rolling plains, 12 miles east of the "foothills," a series of gentle mountains that climb to 11,000 feet. Just beyond is the "Front Range of the Rocky Mountains," a series of formidable snowcapped peaks that rise to 14,000 feet. Denver might not be in the mountains, but the mountains still dominate the city. The picturesque mountain panorama from Denver is 140 miles long. There are 200 visible named peaks including 32 that soar to 13,000 feet and above. State law prohibits building any structure that would block the view from the Colorado State Capitol. Penetrating the mountains west of Denver required building the highest auto tunnel in the world (Eisenhower Tunnel) and the sixth longest railroad tunnel in the country (Moffat Tunnel).

4. Denver is a city of many colors and cultures.

Denver grew by 30 percent in the 1990s – an average of 1,000 new residents a week, every week for 10 years. In this period, the Hispanic population in Colorado increased by 73 percent. Today, 32 percent of the City of Denver is of Hispanic and Latino descent and 11 percent are African American. Denver's diversity is celebrated at numerous festivals and events including the nation's largest Cinco de Mayo celebration and the largest Martin Luther King Jr. march and rally, referred to the locals as a "marade". Denver has a population of 594,740, while there are 2.7 million people in the metro area.

5. Denver's history is short, but colorful.

In 1858, there was not a single person living in the Denver metro area except for some migrating camps of Arapaho and Cheyenne Native Americans. Just 30 years later, Colorado was a state with a population of almost 200,000. It was a Gold Rush that caused this boom and in a 30 to 40 year period Denver saw some of the wildest events in the "Wild West." This fascinating period is brought to life at museums, old gold mining towns and in hundreds of elegant Victorian buildings. LoDo, a 26 square block historic district, has the largest concentration of Victorian and turn-of-the-century buildings in the country. Today, LoDo is home to 90 brewpubs, jazz cafes, restaurants, sports bars and nightclubs.



Exterior of Frederic C. Hamilton Building of the Denver Art Museum.
Photo: Steve Crecelius for Denver Metre Convention & Visitors Bureau.

6. Denver loves its sports.

Denver is one of only two cities (Philadelphia is the other) to have seven professional sports teams: NFL Denver Broncos; NBA Denver Nuggets; NHL Colorado Avalanche; MLB Colorado Rockies; MLS Colorado Rapids; MLL Colorado Outlaws; and NLL Colorado Mammoth. The Colorado Rockies have 11 Major League Baseball attendance records, while the Denver Broncos have sold out every game for more than 20 years. Denver also hosts one of the world's largest rodeos – the National Western Stock Show & Rodeo. Denver is the only city to build three new sports stadiums in the 1990s: 50,000-seat Coors Field; 75,000-seat INVESCO Field at Mile High and 20,000-seat Pepsi Center.

7. Denver brews more beer than any other city.

The first building in Denver was a saloon, so it's natural that Denver would become a great beer town. Coors Brewery is the world's largest. Denver's Great American Beer Festival is the largest in the nation, with more than 1,900 different beers. The Wynkoop Brewing Company is one of the largest brewpubs in the country. On an average day, Denver brews more than 80 different beers. Why is Denver the "Napa Valley of Beer"? Well, just as the water tumbling down from the Scottish Highlands has made Scotland a renowned center for whiskey, the great taste of Rocky Mountain spring water provides a key basic ingredient for the city's booming beer brewing industry.

8. Denver - The Mile High City, really is exactly one mile high.

By an amazing stroke of good luck, the 13th step on the west side of the State Capitol Building is exactly 5,280 feet above sea level – one mile high. In Denver's rarified air, golf balls go 10 percent farther. So

do cocktails. Alcoholic drinks pack more of a punch than at sea level. The sun feels warmer, because you are closer to it and there is 25 percent less protection from the sun, so sunscreen is a must. The Mile High City is also extremely dry, so it is a good idea to drink more water than usual. With less water vapor in the air at this altitude, the sky really is bluer in Colorado.

9. Denver has the 10th largest downtown in the United States.

Unlike some Western cities, Denver has a definitive, exciting and walkable downtown – the 10th largest in the nation. Within just a one mile radius, there are three sports stadiums, the country's second largest performing arts complex, an assortment of art and history museums, a mint producing 10 billion coins a year, a river offering whitewater rafting, the country's only downtown amusement park, a new world-class aquarium, more than 8,000 hotel rooms and more than 300 restaurants, brewpubs and music clubs.

10. Denver has the largest city park system in the country.

Denver has more than 200 parks within the city and 14,000 acres of parks in the nearby mountains, including spectacular Red Rocks Amphitheatre. The city has its own buffalo herd located in the mountains with a panoramic view. Other mountain parks include Echo Lake, at the base of the Mount Evans highway – the highest road in North America and Buffalo Bill's Grave on top of Lookout Mountain. Denver plants more than 200,000 flowers in 26 formal flower gardens every spring. There are more than 800 miles of off-street bike paths, 90 golf courses and one of the nation's largest urban trail systems. Due to all of these recreational opportunities, a federal study found that Denver has the thinnest residents of any major U.S. city. ■

This Guide brought to you by these

Proud Supporters of the CU Anschutz Medical Campus

APARTMENTS & HOUSING

21 Fitzsimons
Please see ad on p. 5.

Fitzsimons Landing
Please see ad on p. 10.

BANKING & FINANCIAL SERVICES

Campus Dough
Please see ad on facing page.

Fitzsimons Credit Union
Please see ad on p. 19.

SHOPPING & RETAIL

Boulder's Best Organics
Please see ad on p. 21.

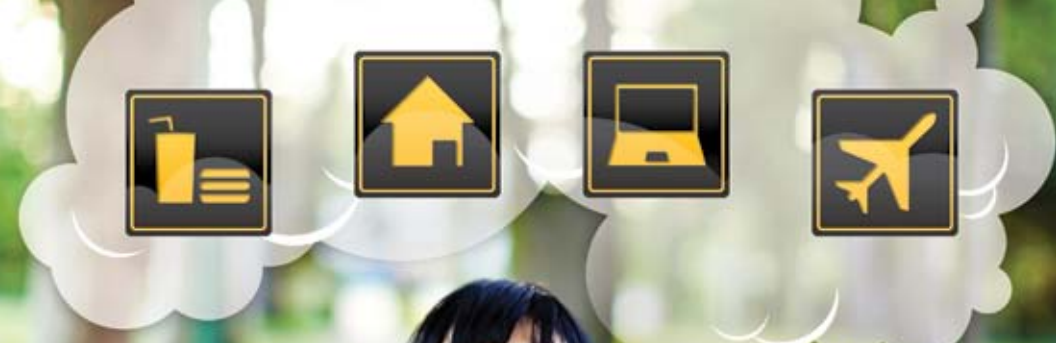
Dell
Please see ad on p. 23.

ItMakesMeGiggle.com
Please see ad on p. 22.

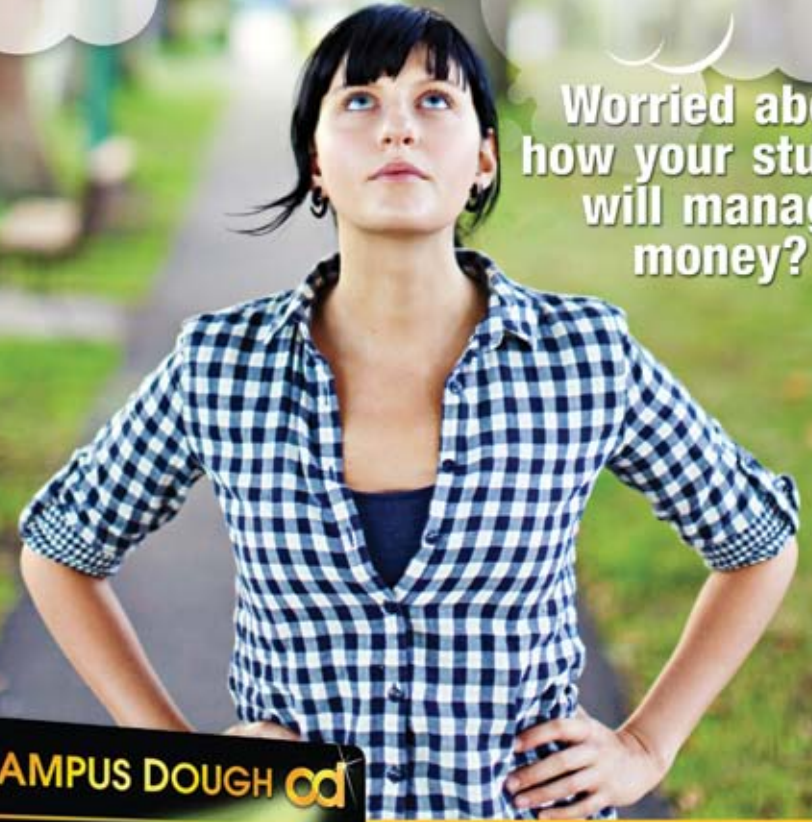
For advertising inquiries, please contact UPM Sales Consultant Rebecca Boozan at (866) 721-1357 or email: ask@universityparent.com



www.universityparent.com/ucdamc



Worried about how your student will manage money?



Check out the
CAMPUS DOUGH CARD!

The Best Way for Students to
Manage & Save Money.

www.campusdough.com



The Campus Dough DebitSmart Visa® Prepaid Card is issued by MetaBank™ pursuant to a license from Visa U.S.A. Inc. The USA PATRIOT Act is a Federal law that requires all financial institutions to obtain, verify, and record information that identifies each person who opens an account. You will be asked to provide your name, address, date of birth, and other information that will allow us to identify you. You may also be asked to provide documentation as proof of identification. *100% approval guaranteed* and "Everyone Qualifies" is contingent upon successfully passing the mandatory identification confirmation.

UNIVERSITY PARENT

Brings You

the Online



CU Anschutz Medical Campus

GUIDE

This online resource for parents
features the best places to

shop

eat

relax

stay

see

unwind

play

explore

visit
and more...

www.universityparent.com/ucdamc

Or find us with your mobile device!

Simply download a QR scanner app to your
mobile device and scan the QR code to the right!

