

Characterizing the Burden of Disease and Improving Health Among Western Miners

Tristan Victoroff, MPH

Division of Respiratory Disease Studies
National Institute for Occupational Safety and Health (NIOSH)
Centers for Disease Control and Prevention
September 11, 2014



Metal-Nonmetal (MNM) Mining Industry

- ❑ Employs ~ 66,000 workers
- ❑ Contributes up to \$232 billion to U.S. GDP
- ❑ Mined resources ubiquitous in everyday products

Physical Hazards

❑ Roof collapse

❑ Heavy machinery

❑ Toxic exposures



Miners are Vulnerable

Physical hazards



- ❑ Long hours
- ❑ Remote locations
- ❑ High turnover
- ❑ Mobile population

Program Goals

- ❑ Assess the health status of MNM miners**
- ❑ Identify opportunities for disease prevention**
- ❑ Improve miner health**

MNM Program Goals

- ❑ **Assess the health status of MNM miners**
- ❑ Identify opportunities for disease prevention
- ❑ Improve miner health



Sources of Information about MNM Miners' Health

Published
literature

Published literature

- ❑ Literature review
- ❑ National Survey of the Mining Population
- ❑ National Health Interview Survey

Sources of Information about MNM Miners' Health

Published literature

Existing public health data

Existing public health data

- ❑ National Occupational Mortality Surveillance
- ❑ Mining Safety and Health Administration

Sources of Information about MNM Miners' Health

Published literature

Existing public health data

Existing public health data

- ❑ National Occupational Mortality Surveillance
- ❑ Mining Safety and Health Administration
- ❑ State and local health departments
- ❑ State rural health offices
- ❑ Federal agencies

Sources of Information about MNM Miners' Health

Published literature

Existing public health data

Existing clinical data: miner-specific

Existing clinical data: miner-specific

- ❑ Miners' clinics and hospitals
 - ❑ Specialize in caring for miners
- ❑ Two miners' clinics/hospitals data collection in progress

Sources of Information about MNM Miners' Health

Published literature

Existing public health data

Existing clinical data: miner-specific

Existing clinical data: primary care

Existing clinical data: primary care clinics

- ❑ Mapped mines in 12 states
- ❑ Called 151 clinics near mines
 - ❑ 64 clinics see miners

Sources of Information about MNM Miners' Health

Published literature

Existing public health data

Existing clinical data: miner-specific

Existing clinical data: primary care

Existing clinical data: primary care clinics

- ❑ Mapped mines in 12 states
- ❑ Called 151 clinics near mines
 - ❑ 64 clinics see miners
- ❑ No recorded occupation
- ❑ Partner with 1 clinic
 - ❑ Add industry and occupation to medical records

Sources of Information about MNM Miners' Health

Published literature

Existing public health data

Existing clinical data: miner-specific

Existing clinical data: primary care

Collect our own data

Collect our own data: mobile clinic



Sources of Information about MNM Miners' Health

Published literature

Existing public health data

Existing clinical data: miner-specific

Existing clinical data: primary care

Collect our own data

Collect our own data: mobile clinic



- ❑ Chest X-ray
- ❑ Pulmonary function test
- ❑ Height and weight
- ❑ Blood pressure
- ❑ Cholesterol and diabetes test
- ❑ Questionnaire

Sources of Information about MNM Miners' Health

Published literature

Existing public health data

Existing clinical data: miner-specific

Existing clinical data: primary care

Collect our own data

Collect our own data: mobile clinic



Questionnaire

- ❑ Work history
- ❑ Exposures
- ❑ Job stress
- ❑ Musculoskeletal symptoms
- ❑ Chronic disease

Next Steps

Published literature

Existing public health data

Miner's Hospitals

Primary Care Clinics

Collect our own data

- ❑ Complete data collection from miners' hospitals
- ❑ Capture industry and occupation in primary care visits
- ❑ Complete preparations for NIOSH mobile clinic

...Next Steps

- ❑ Engage labor and industry partners
- ❑ Pilot health assessments in 2015

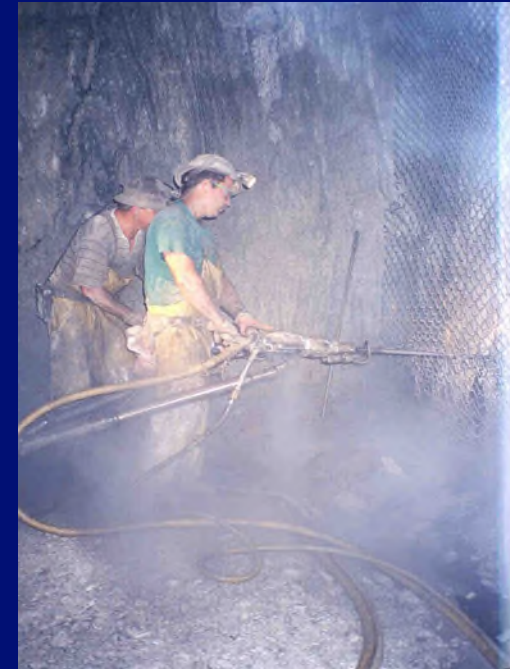
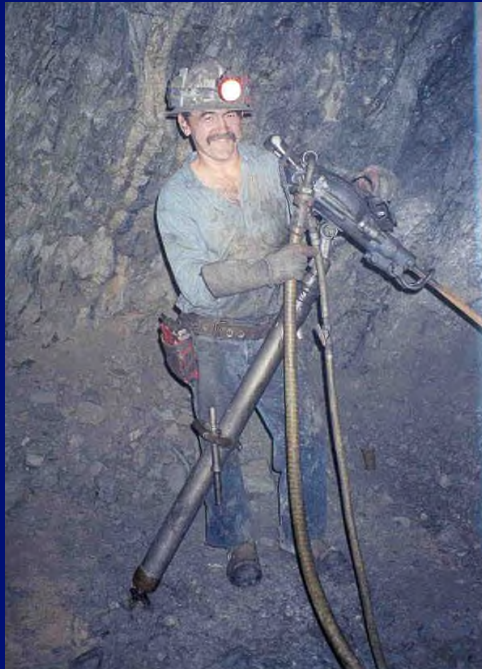
Summary

- ❑ Economically important industry
- ❑ Concentrated in western U.S.
- ❑ Vulnerable workforce
- ❑ Limited existing data
- ❑ NIOSH program in development



Ultimate Objective

- ❑ Data-driven interventions to improve the health of miners



Tristan Victoroff

uwm3@cdc.gov

509-354-8067

The findings and conclusions in this report are those of the authors and do not necessarily represent the official position of the Centers for Disease Control and Prevention.

Acknowledgments

Kristin Yeoman
Cara Halldin
Alice Shumate

Scott Laney
Eileen Storey
Doug Johns

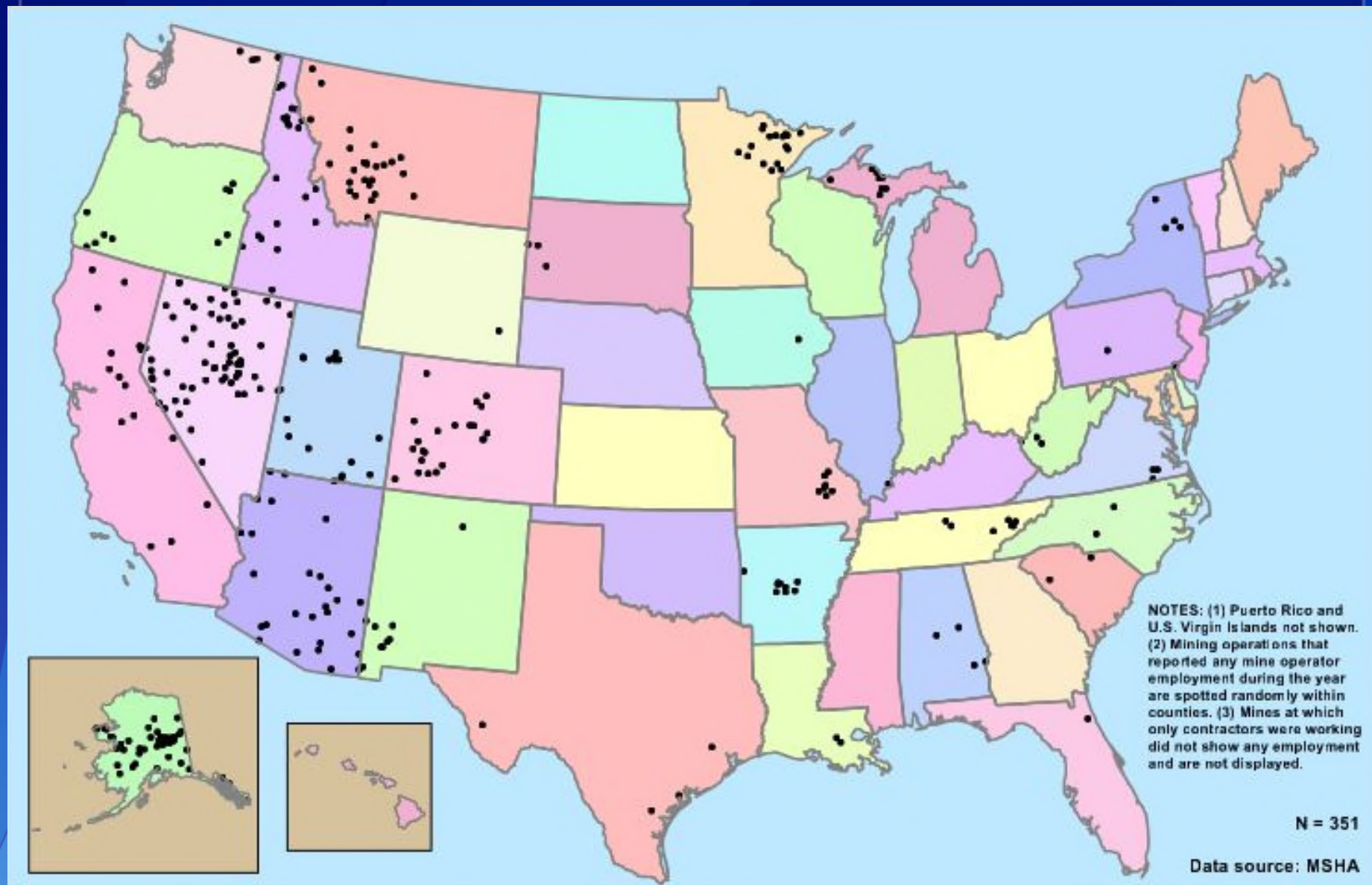
Tristan Victoroff

uwm3@cdc.gov

509-354-8067

The findings and conclusions in this report are those of the authors and do not necessarily represent the official position of the Centers for Disease Control and Prevention.

Metal Mines Concentrated in the West



Source: (<http://www.cdc.gov/niosh/mining/statistics/metaloperators.html>)