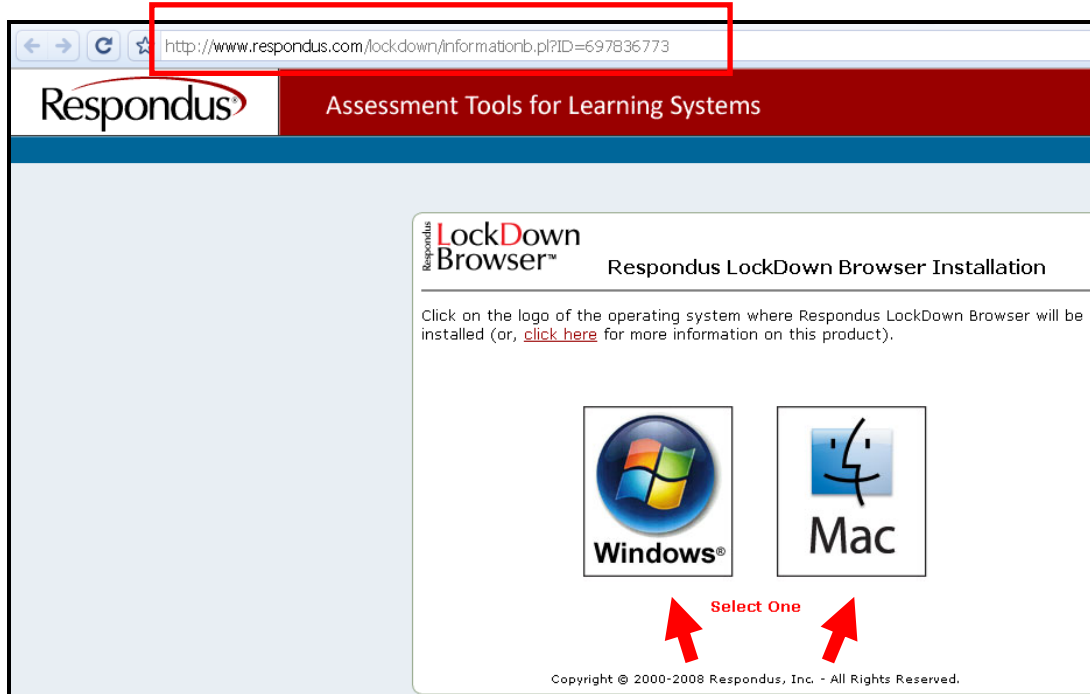


## Student Guide

### Step 1

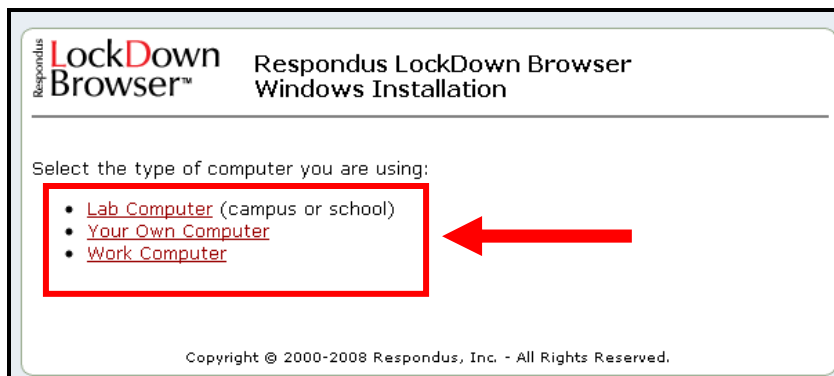
Download the Respondus Lockdown Browser available at the following link

<http://www.respondus.com/lockdown/informationb.pl?ID=697836773>. Be sure that the ID at the end of the link has the number 697836773 as this is specific to our university Blackboard login page.

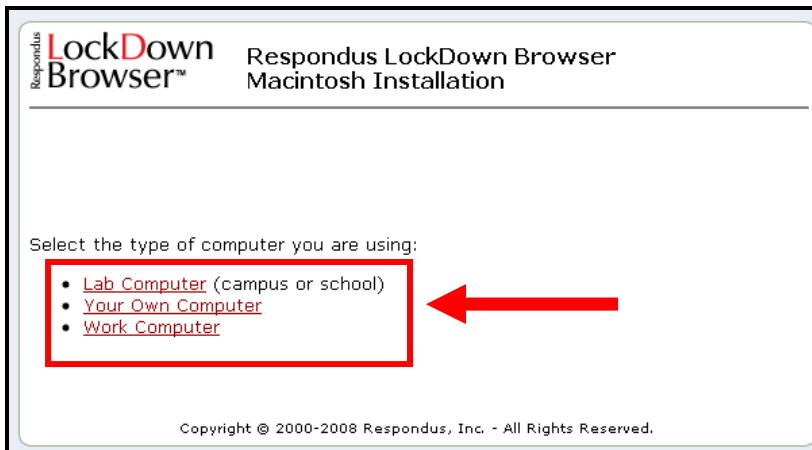


### Step 2

Click on the logo to download either the Windows or Mac version of the LockDown Browser. Next, select the link that best describes the type of computer you are using.



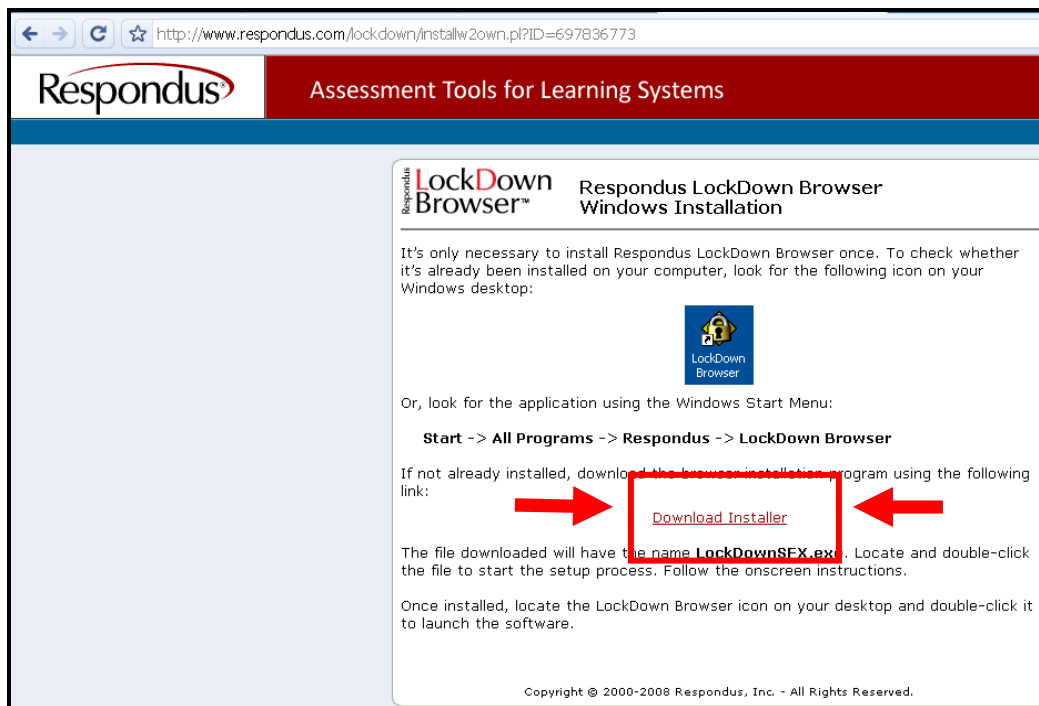
### Windows Installation screen



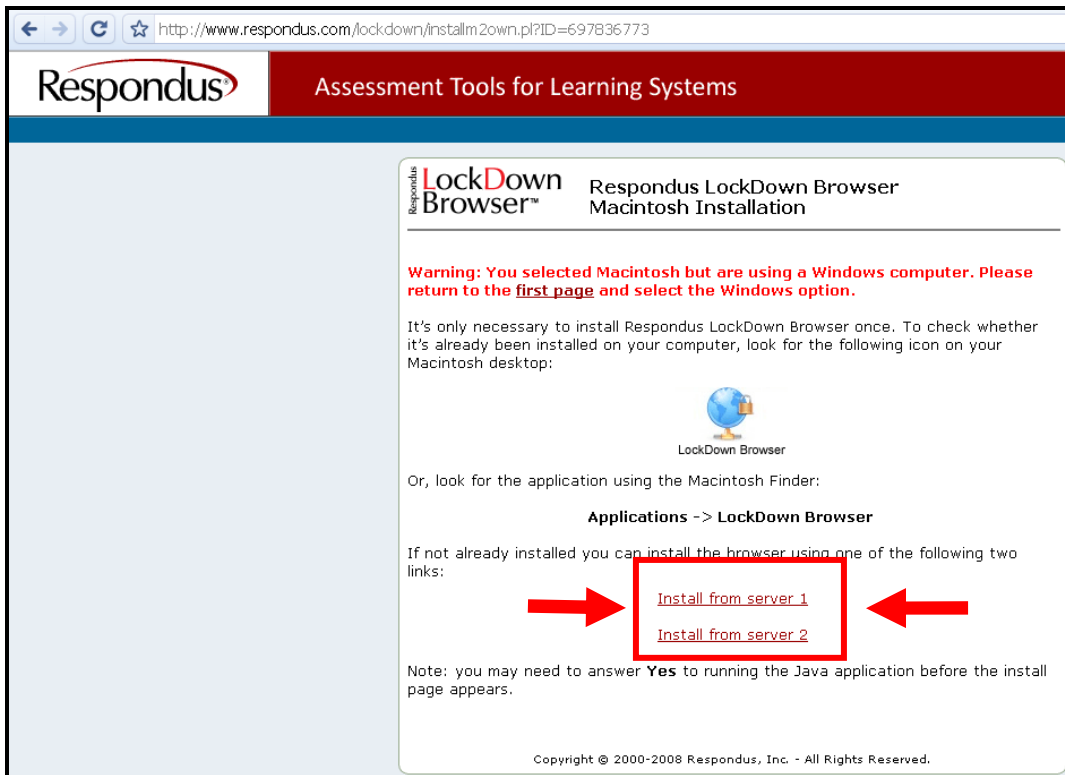
**Macintosh Installation screen**

### Step 3

Click on the **Download Installer** link to begin the installation process.



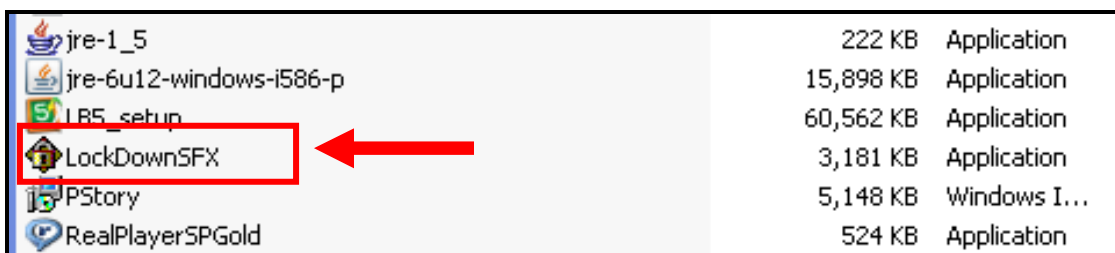
**Windows Download Installer page**



### Macintosh Download Installerpage

#### Step 4

Locate and select the application file to begin the installation process.



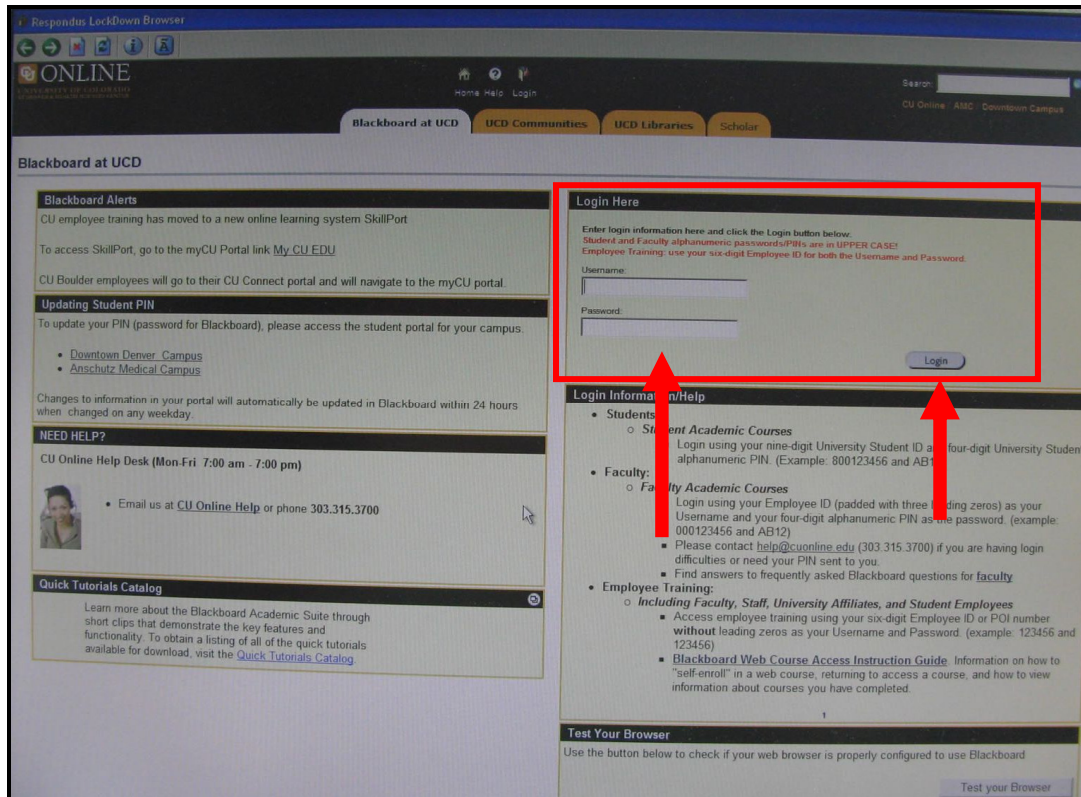
#### Step 5

Once you have successfully installed the LockDown Browser onto your computer, you will need to click on the icon on your desktop to launch the browser



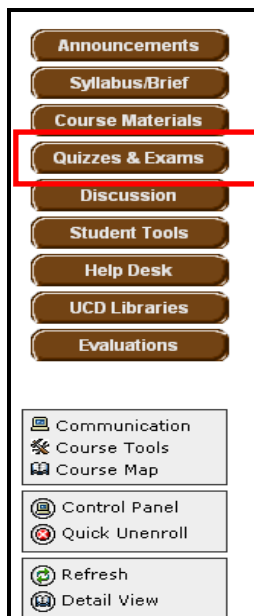
### Step 6

Once you have clicked on the LockDown Browser icon on your desktop, it will take a few seconds to load before you are directed to the Blackboard login. Enter your Username and Password and then click **Login**



### Step 7

Go to the **Exam/Quiz/Test** link from the course menu and select the available test.



## Step 8

Click the **OK** button to launch the test.

