



SERVICE DESCRIPTION and PRICING

Demetria Palmer, *Esthetician*
 1017 South Gaylord, Suite B8 Denver, Colorado 80209 | PHONE 303.842.4733

SKIN TREATMENTS

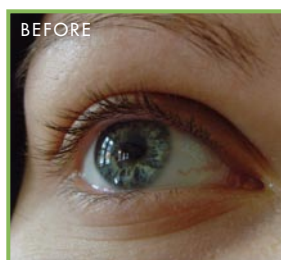
Each facial, chemical peel or back treatment is personalized to every individual. Consultations are \$45 and include a mini facial to determine your personal regiment. Each facial/back treatment includes: cleanse, massage, exfoliation, extractions, 2-3 treatment masks, steam, moisturizer and sun block.

1/2 HOUR FACIAL _____	\$45
1 HOUR FACIAL (WOMEN'S) _____	\$72
1 HOUR FACIAL (MEN'S) _____	\$60
EPI FACIAL (WOMEN'S) _____	\$85
EPI FACIAL (MEN'S) _____	\$75
1-1/2 HOUR FACIAL (Including back treatment) _____	\$85
CHEMICAL PEEL MILD _____	\$95
<i>(May be applied to face, back or chest. 1-3 days down time.)</i>	
CHEMICAL PEEL TCA or JESSNER'S _____	\$140
<i>(Includes three post-treatment products. 3-7 days down time.)</i>	

LASH TREATMENTS

From a natural enhancement to your own lashes or a synthetic extension added onto your individual lash. 45 -65 lashes applied per eye at first full set appointment. Colored lashes are offered in blue, green, purple and brown to give a subtle, classic look to complement your eye color.

NATURAL EYE LASH ENHANCEMENT _____	\$20 – \$65
LASH EXTENSION FULL SET _____	\$225 – \$250
RELASH APPOINTMENTS <i>(Minimum 3 weeks suggested to keep a full look)</i>	



1 WEEK _____	\$38
2 WEEK _____	\$75
3 WEEK _____	\$150
4 WEEK _____	\$200
5 WEEK _____	\$225
6 WEEK _____	\$250



SERVICE DESCRIPTION and PRICING (CONTINUED)

Demetria Palmer, *Esthetician*
1017 South Gaylord, Suite B8 Denver, Colorado 80209 | PHONE 303.842.4733

EYE BROW ENHANCEMENTS

A main feature in framing the face, it is important to shape the eye brows evenly. This can be achieved through waxing, tweezing and/or tinting a natural color.

BROW SHAPING _____	\$18
BROW TINTING _____	\$15
BROW ENHANCEMENT _____	\$30

HAIR REMOVAL

A sensitive wax is used for the entire body, head to toe. The most popular areas waxed at Skin by Demi are listed below. If there is an area you are interested in that is not mentioned here please ask Demi for pricing.

LIPS _____	\$10
CHIN _____	\$10
FULL FACE _____	\$30
BASIC BIKINI _____	\$20
TRADITIONAL BIKINI _____	\$25 – \$30
FRENCH BIKINI _____	\$30 – \$35
FULL BIKINI _____	\$40
HALF LEG _____	\$35
FULL LEG _____	\$45
BACK _____	\$20 – \$45
CHEST _____	\$20 – \$45
HIPS (BOTTOM) _____	\$25
ARMS _____	\$22
UNDERARMS _____	\$18



SERVICE DESCRIPTION and PRICING (CONTINUED)

Demetria Palmer, *Esthetician*
1017 South Gaylord, Suite B8 Denver, Colorado 80209 | PHONE 303.842.4733

MAKEUP

Mineral makeup is used for special occasions, everyday wear and home care. Lessons are available for new tips, personal growth or destination weddings. Please see wedding services if inquiring on wedding makeup.)

APPLICATION IN STUDIO _____	\$35
MAKEUP LESSON _____	\$45
MAKEUP PARTY _____	\$125/hour

(2-4 faces in an hour. Faces per hour depends on classic natural makeup or dramatic application choices and time utilized by party members. Two makeup artists might be required for parties of 20 or more.)

MASSAGE

Demi is a reiki Master and provides this form of energy work during many of her services. Massage is peaceful and quite relaxing for both the client and therapist in an optimal setting to focus on her Reiki touch.

Massage gatherings can take place in hotels, offices or at home. Travel time is included for metro Denver area only. Must provide quiet room with a cd player. Parties of more than four please consult Demi for pricing as an additional therapist may be required.

1 HOUR MASSAGE IN STUDIO _____	\$60
1-1/2 HOUR MASSAGE IN STUDIO _____	\$90
MASSAGE GATHERINGS	
FOR TWO _____	\$150
FOR FOUR _____	\$300

WEDDING SERVICES

Makeup, special hair design and lash extensions are all available at your wedding location. We travel anywhere, from metro Denver to mountain towns to out of state or country. We take pride in our talents and our ability to help keep the wedding party on time and looking beautiful.*

HOURLY RATE PER ARTIST _____	\$125
FLAT DAY RATE PER ARTIST _____	\$1,000

**As seen in *Elegant Bride*
Fall 2007, pages 110-113**

*There is no extra charge for traveling less than 2-1/2 hours by car. Traveling by car for an excess of 2-1/2 hours, or expenses incurred for plane travel and hotel, will require a reimbursement charge. Largest bridal party accepted is 25. Flat day rate does not include any travel expenses. Each bride has her own unique requests to personalize her wedding - please consult Demi for the organization of your party's look. In one hour we complete 2-3 faces with makeup or 2-3 special hair designs (approximately \$42 - \$64 per person). The bride is given 30-60 minutes for makeup and 45-60 minutes for hair design, not including trial run. Full set lash extensions require 2 hours 15 minutes per person. If time will not allow on your wedding day, we recommend that extensions are completed the evening before.