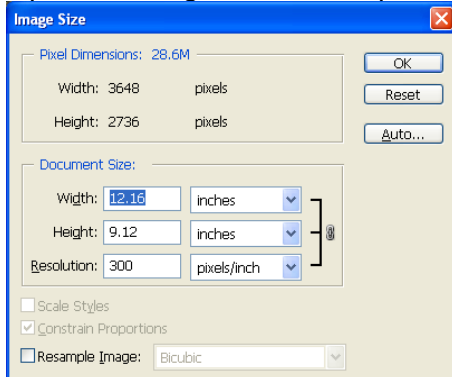


# Basic Photoshop for Portfolio Seminars

This document uses the Nikon P5000, 10 mega pixel camera as an example.

## Resize an image without Resampling

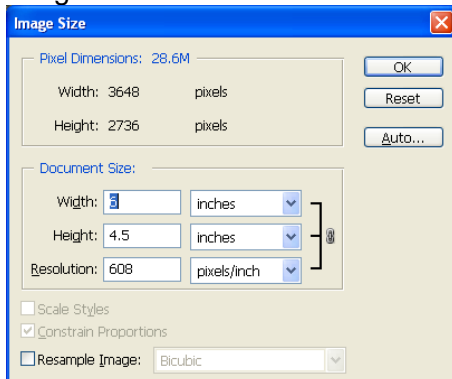
Open the image in Photoshop. Under the Image pull-down menu open the Image Size window.



File size = 28.6M (megabytes).

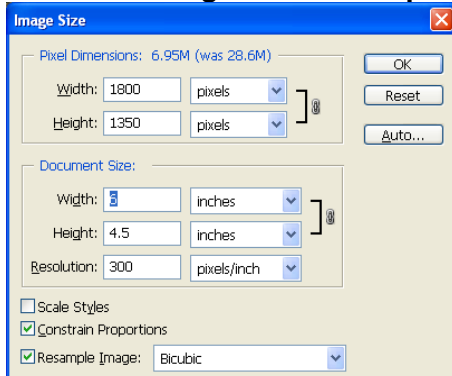
Select Constrain Proportions. This will allow you to adjust your document size without stretching the image.

Deselect Resample Image to adjust the document size but not lose any of the 10 million pixels in the image or 28.6M file size.



Changing Width from 12.16 inches to 6 inches automatically adjusted Height to 4.5 inches and Resolution to 608 ppi. The original pixel dimensions and file size of 28.6M was maintained.

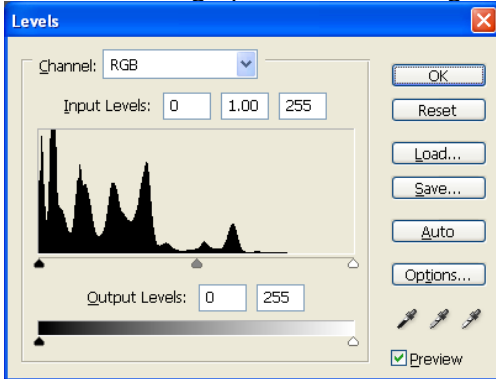
## Resize an Image with Resampling



Changing Width from 12.16 inches to 6 inches automatically adjusted Height to 4.5 inches but the Resolution remained at 300 ppi. The original pixel dimensions changed and the file size was reduced from 28.6M to 6.95M.

## Adjust Brightness and Contrast

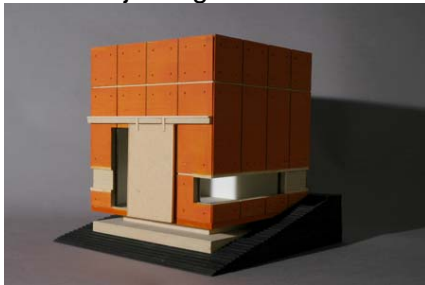
Under the Image pull-down menu go to Adjustments and open the Levels window.



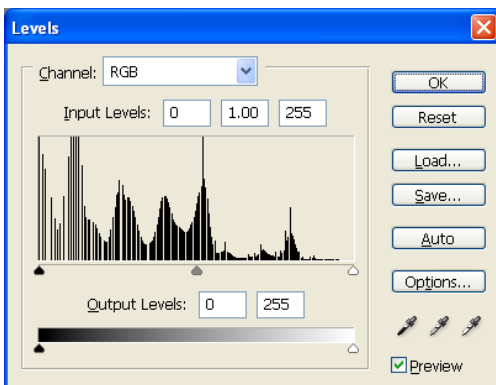
Correct the tonal range and color balance of an image by adjusting intensity levels of image shadows, mid-tones, and highlights (represented by the black, grey and white droppers under the histogram). Moving the white or grey droppers to the left will lighten the mid-tones and highlights. Moving the black or grey droppers to the right will darken the shadows and mid-tones. Adjusting the intensity of these values will also increase or decrease the contrast of the image.



Before adjusting levels



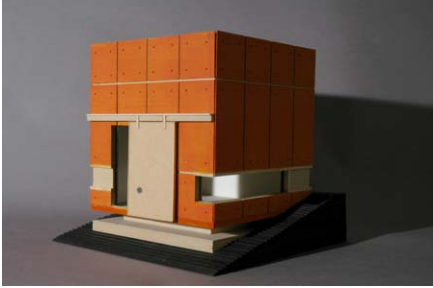
After adjusting the white and grey droppers to the left to lighten the mid-tones and highlights.



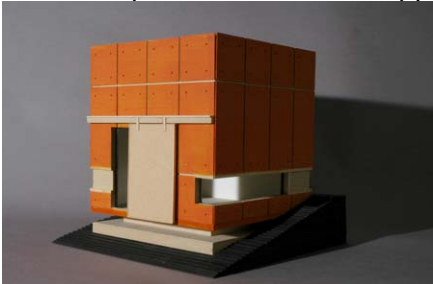
Resulting histogram compared to the original above.

## Clean an Image

In the tools palette window select the Clone Stamp tool to take a sample of the image, which you can then apply over part of the same image.



Above image has a black spot on the door. Position Clone Stamp tool over a section of the door closest to the black spot. Press Alt and left click on the mouse to copy those pixels. Position the tool over the spot and left click to apply those sampled pixels.



The black spot is now covered up with sampled pixels from another part of the door.

**HINT:** If you want to change the size and hardness of the tool, right click on the mouse when the tool is selected to bring up a dialog box. Adjusting these values will give you more control when cleaning your image.

## Save an image as a TIFF

Most digital cameras record the image as a JPEG (compressed) file format. JPEGs lose resolution every time they are opened, changed, resaved and recompressed. To alleviate any loss of resolution when adjusting an image, change the file format to TIFF (uncompressed) the first time you open it.

Under the File pull-down menu open the Save as window. The Format pull-down window will read JPEG. Select TIFF and then Save. From this point on you will be able to adjust the image and resave it without recompressing it and losing resolution.